

R.A.F.A. Leek Club



Three Generations of Leek Growers

This years show was held on Saturday 8th September in the R.A.F.A. Club where 15 members showed leeks.

Entries in the open section were up on last year. The show was judged by Mr Colin Johnston. The Leek Club is grateful for the support of the sponsors, also for the help given by Mrs Shona Nichol and the R.A.F.A. Club.

The main prize winners were:
 1st Mr Steven Atkinson,
 2nd Mrs Jenny Atkinson,
 3rd Mr Stuart Hankin.
 Best leek in the show - Mrs J Atkinson, highest placed lady - Mrs J Atkinson, the Robin Smith Trophy for French Leek - Mr S Hankin, Wooden spoon - Mrs H Robinson, Most improved member - Mr B Wishart, Most points in show - Mr S Hankin, the Brian Atkinson Memorial

New Book from History Group

The Holme St. Cuthbert History Group will be publishing their new book "More Plain People" early this month.

The book is a fascinating mixture of history, profiles of local characters and nostalgia from the whole of the Solway coast between Salt pans and Skinburness.

It features around three hundred photographs. Many of these were loaned to the group by Heather and Olive Wood of Skinburness Road. Their family ran the famous 'emporium' at the corner of Wampool Street for over a hundred years and were Silloth's leading publishers of post cards



Are you in this picture? Identify yourself and you will receive a free copy of the book.

and guide books.

Among the pictures from the Woods' collection is this wonderful shot of the Gray family's donkeys on Silloth green. It is thought to have been taken sometime around 1930 but nothing else is known about it.

The History group are appealing for help from Buzz readers. They want to know if readers can identify any of the children; they suspect they were local kids, specially posed by the photographer.

If you can help, write to the Buzz or email the group through their website at www.solway.org.uk. If any reader can prove they are in the picture, they will get a free presentation copy of the new book!

More Plain People and Places on the Solway Plain

will be available from Winter's Newsagents, the Silloth Tourist Office and most other local bookshops.

It can also be obtained by mail order, price £9.95 post free, from Holme St Cuthbert History Group, Nook Farm, Beckfoot, Silloth, CA7 4LG.

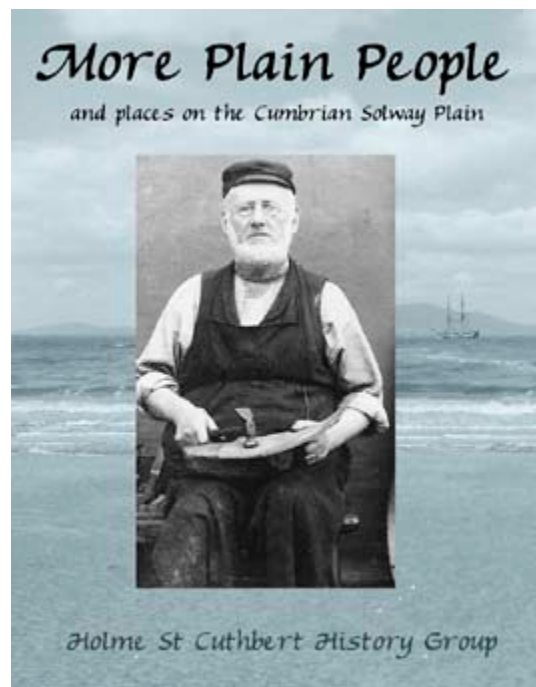
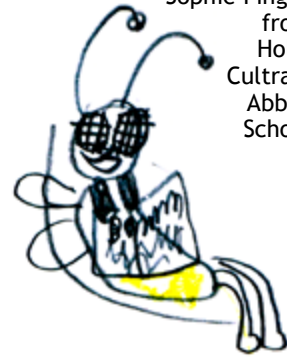


Fig Bees by Sophie Pingey from Holm Cultram Abbey School



Skinburness Residents Association

A meeting was held in the Golf Hotel on November 1st, it was reported that four projects have been completed.

They are: flooding across the road at the Wath end of the marsh, the drainage pipes were cleared, the walkway along the sea wall at Eastcote is now clear of stones, the sea gates along the same stretch have been repaired and the bus shelter at Skinburness is now on a regular cleaning schedule.

We would like to thank the Town Council for their help in these issues.

If any member of the SRA has a project they would like us to raise please let us know 14 days before our next meeting on the 10th January. If you are new to our area and would like to become a member contact the Secretary: Kath on Silloth 32272.

Our membership is continuing to grow steadily, the bigger we are, the stronger we are.

Addison Orthodontics
Denture Repair Service
 54 Esk Street Silloth
016973 32208

Salon Di Moda
Unisex Hairdressers

- Human Hair Extensions
- Wella Colouring
- Redken Treatments
- Cutting
- Styling

Opening Hours:
 Tuesday 9am to 6pm Friday 9am to 6pm
 Wednesday 10am to 8pm Saturday 8am to 4pm
 Thursday 9am to 6pm Sun/Mon closed

3 Wampool Street, Silloth
 Proprietor: Jodie Housby Tel: 016973 33060

WEST VIEW GUEST HOUSE
B & B
 OR
Room Only
 9 STATION Rd Silloth
016973 31449
WESTVIEWQUESTHOUSE.CO.UK

SCRUMPTIOUS
 Baguettes
 Luxury ice-cream
 Fresh coffee

Phone orders welcome
016973 31300
 4 Wampool Street Silloth
 Open 7 days

Simplicity INTERIORS

Traditional and Contemporary
 Quality Kitchens & Bedrooms
FREE ESTIMATE & DESIGN SERVICE

FRANKE gorenje

BOSCH schüller KUCHYNE Whirlpool

NEFF AEG Miele

Unit 2, Miller Business Park, Station Road, Wigton, CA7 9BA
 Tel: 016973 43400