



Baby Queen Bee  
by Sophie Jayne Stalker from Silloth Primary School

# Solway Buzz

www.solwaybuzz.co.uk

May 2014

local news - for you - by you - about you - free to you - local news

**FREE PAPER**

Issue 124

Page 4  
Plans for WWI Display



Page 5  
A Heroine from 1964



Page 6  
Happy 96th Birthday



Page 7  
Jolly Tots at Gincase



Page 9  
New Venture for Sarah



Page 15  
Paint Nails for Charity



Page 16  
New Strips for Kids



## FIND the CHICKS

There are a total of 24 Chicks scattered through the paper



## 2014 Events

21st April

**Family Laser Clay Pigeon Shoot**

25th May

**Silloth Green Day**

21st & 22nd June

**Silloth Vintage Rally**

19th & 20th July

**Silloth Kite Festival**

26th July

**Abbeytown Carnival**

15th August

**Theatre on the Green**

17th August

**Beach Half Marathon**

25th August

**Silloth Carnival**

4th to 7th September

**Silloth Music & Beer Festival**

7th September

**Silloth Craft Show**

24th October

**Bonfire Night on Silloth Airfield**

# Lambretta Club Visits Silloth



See full story on page 5



Photo by: Jennifer Bailey of the sunset over Silloth on Wednesday 26th March

NO RECOIL ANYBODY CAN JOIN IN

# SILLOTH

FUN FOR ALL THE FAMILY

# SHOOTOUT

EASTER BANK HOLIDAY

Laser Clay Pigeon Shooting

# ON THE GREEN

Proceeds Go To The SILLOTH-on-SOLWAY ROTARY CLUB





# Be Posh - Go Glamping



Lyn and Andy Lewis of Wallsend Guest House and Tea Room, Bowness on Solway, are delighted to announce the launch of their new venture, Wallsend Wigwams®.

Becoming part of the UK network of over sixty sites of Wigwam® Holidays, the new site adjacent to Wallsend Guest House is the realisation of a three year period of consultations, planning and development.

Lyn and Andy acquired the Guest House in November 2010, taking over a well-established bed and breakfast business which welcomes over 1,000 visitors each year, mainly walkers of the Hadrian's Wall National

Trail.

It became clear after their first season in Bowness that there was an overwhelming demand for visitor accommodation in the area, and that there was great potential for the village and its surroundings to become a viable holiday destination for people wishing to spend time in and around the Solway Coast Area of Outstanding Natural Beauty.

Planning permission for the venture was granted by Allerdale Council in November 2011 for the development of a camp site to include camping cabins. After a lot of research, Wigwam® cabins were chosen for the site due to

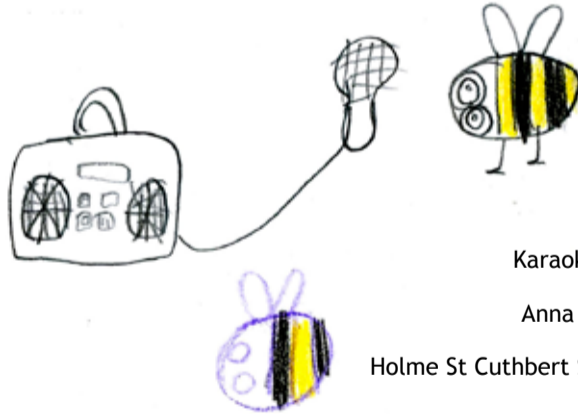
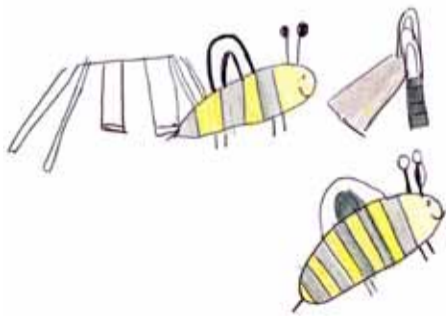
their levels of comfort and facilities as well as their green credentials. As the 60th site in the Wigwam® Holiday family, Wallsend will become part of a national network providing unique, affordable and enjoyable holiday experiences in rural locations.

The cabins at Wallsend represent 'Glamping' at its finest. Sleeping up to four people, each has a shower and toilet en suite, together with mini kitchen, fridge, TV and cosy electric heating. With French doors onto a decked seating area, the cabins are perfect for enjoying the peaceful village location all year round.

Please see [www.wallsend.net](http://www.wallsend.net) for further details.



Warjak Bee by Casey Jo Wilson from Silloth Primary School



Karaoke Bee by Anna Fisher from Holme St Cuthbert School

**Tanglewood Caravan Park**  
**Silloth-on-Solway**  
**016973 31253**

Bar on site  
 Tourers Welcome  
 Hire Vans & Seasonal Pitches

*Tanglewood is a pet friendly family run park ideal for relaxing laid back holidays*

[www.tanglewoodcaravanpark.co.uk](http://www.tanglewoodcaravanpark.co.uk)

**JayBee's**

**MILK 2 litre £1.30**  
**6 Free Range Eggs £1**  
**Bacon £1 a pack**  
**1kg bag Oven Chips £1**  
**Pizzas from £1**

**Toys • Off-Licence • Hardware • Gifts**  
**Carpet Cleaner Hire • Key Cutting**  
**Watch Batteries & Straps Fitted**

**open 7 days a week**  
 6 Criffel Street, Silloth, Tel: 016973 31245

# County Web Site Gets ★★★★★

Cumbria County Council's website has been awarded the top, four-star rating for its website for the first time ever.

Every year the independent public sector IT body SOCITM analyses hundreds of local authority websites and gives them a star rating for the overall content, functionality and user-friendliness. Cumbria County Council was named among just five county councils with a four-star site – the others being Dorset, Kent, Oxfordshire and Surrey.

In total SOCITM assessed the sites of 453 councils this year and 31 were rated 4-stars (a reduction on last year's 39 4-star sites) – so Cumbria is in the top 7% of local authorities. Three of the county's district councils – Allerdale, Carlisle and Eden – also won four-star ratings, meaning Cumbria is one of the country's strongest areas for online information about local government services.

In its overall rating on the county council's site SOCITM said: "On the whole, this is a very easy site to navigate and there is a lot of very useful content. The mobile version works quite well... The completion of the tasks was consistently good." Areas of the site which received the highest scoring included applying for a copy of a birth certificate and the A-Z – these areas were also identified as examples of best practice in SOCITM's national report.

Cllr Ian Stewart, Cumbria County Council's Cabinet member responsible for Organisational Change including ICT, said: "I'm



delighted that the hard work of everyone who works on the council's website has been recognised and rewarded. Providing information and services digitally is a crucial part of any modern local authority's work and it is heartening to hear that we

are performing up there with the elite. The council's website is not perfect and we are always looking to innovate and improve. SOCITM's input also helps us identify areas where we can work this year to make the service even better."

# Coffee Morning

Report by: Pat Froggatt

The first Coffee Morning of 2014 took place on Saturday 1st February at the Recreation Hall, off Eden Street.

Despite the inclement weather we were pleased to see so many of our regulars and also to welcome once again, our caravanning friends. The morning went with a swing as old friends met up to enjoy this event,

and to get to know all the new faces and visitors. All the usual stalls were busy doing a brisk trade. Once again, the raffle was well supported.

The Committee served coffee and tea (if preferred) with the usual selection of scones, jam and biscuits. It is always a pleasure to see so many people enjoying the event and our thanks go to everyone who supported us.

**Davison's**  
 Home Made Dairy Ice Cream

◆ **New Takeaway Ice Cream Tubs Available** ◆  
 Home Made Ice Cream ◆ Fresh Belgium Waffles  
 Ice Cream Lollies ◆ Ice Cream Floats ◆ Crazy Shakes  
**New Flavours Always Available**

Why Not Try Your Ice Cream Dipped in Chocolate?  
*Ice Cream Made The Way It Should Be!*  
 The Ice Cream Factory, Criffel Street, Silloth. Tel: 016973 32395

**Wallsend Guest House**  
**Wigwams® and Tea Room**

Four Star Silver rated bed and breakfast accommodation

Luxury en suite camping cabins  
 Tea Room open daily April to October and available for private functions at other times by prior arrangement

Lyn & Andy Lewis  
 The Old Rectory, Bowness on Solway, CA7 5AF  
 Tel: 016973 51055 \* [www.wallsend.net](http://www.wallsend.net)



# WI Mourn Their President

Report by: Pat Froggatt

Vice President, Margaret Durham opened the meeting of Causewayhead WI on Wednesday 12th March, by paying tribute to our President, Janice Wilkinson, who sadly passed away on Saturday 8th March. She asked members to stand for a minutes silence in remembrance of Janice.

The meeting then continued with some general business, after which Margaret introduced our guest for the evening Pax Garbedian, who gave a talk and slide show entitled 'Of Samurais & Geishas'.

This proved to be a most informative and interesting programme. It was a visit he had made to Japan from Tokyo to Kyoto passing through some of the most beautiful countryside and visiting castles and temples and passing through villages full of interest. The colours of the Japanese Maples were absolutely superb - also the gardens of the temples and the amazing backdrop of mountains and valleys. He also explained the type of travel inns where they stayed, particularly the rooms and the food. There were photographs of the Geisha girls in their formal costumes. The inside of the temples were stunning - the monks showing them around and explaining the life they lived.

The whole evening was a delight and thoroughly enjoyed by all of us. A vote



of thanks was given by Jean Graham which conveyed everyone's feelings on such a tremendous evening.

The competition was for a fan and this was won by Ann Harrison with Olga Hetherington taking second place. The flower competition was won by Rosemary Brooks and second was Freda Garner.

Footnote: At Janice's funeral members of Causewayhead WI formed a guard of honour out of respect for Janice.

Max, Zed & Busy Bees  
by  
Jonathan Keiran  
and Bobby  
from  
Holme St Cuthbert School



# Solway Plain Artists



The Wood sisters  
Olive (left)  
Heather (right)



Pictures copyright: Times & Star

Report by: Kay Ritchie

Many readers may already be aware of the recent passing of Heather, the second of the well known Wood sisters from Skinburness; Olive passed away last year.

Being descendants of an old Silloth business family, they both played an important part in many interests in the town, dedicating much of their

time to fund raising for various causes, amongst them being Cancer Research and the RNLI.

They were both enthusiastic amateur artists and played a leading part in the setting up and running of Solway Plain Artists, painting for the love of it and encouraging many others with their enthusiasm and unique talent.

Since losing both of

the sisters, their work is now being continued by a committee formed by current members of the Solway Plain Artists.

The group still meet at the Golf Hotel and would welcome any new members who wish to join in the group, whether as a beginner or experienced artist. The Solway Plain Artists meet on the first Wednesday of every month (10am to 1pm) and

the hotel provides us with coffee and shortbread in our own private room for a small fee.

Being in the group entitles members to exhibit their work in the annual windows week each June, window space being kindly given by the owners of local shops. The windows week is sponsored by STAG, Festivals Ltd and the Solway Arts Society.



# Arthritis Support

Report by: Gladys Temple

Apologies were received from Gladys Temple, Glynis McKie, Pauline Mole, Joan Gilbertson, Anne Graham, Eleanor Hodgson and Christine Smithson.

Christine has been Chairman of the Support Group ever since it began so all the members were very sorry to hear that she feels unable to carry on. Thanks were expressed for the many years of service she has given to the Club and all hope her health improves soon so that she will be able to return again to join us. A new member, Lillian Gordon joined us and was made welcome.

Mary Peile agreed to become Chair and Margaret Armstrong agreed to become Vice-Chair. A Get Well card has been sent to Glynis and we hope to see her with us again soon.

The Speaker was Lyn Healey from The Lake District Calvert Trust who

gave a very inspiring talk about their Outdoor Activity Centre that specialises in working with people with disabilities to enable them to reach their potential through the challenge of outdoor adventure. We had not realized how much went on there, from canoeing on Bassenthwaite to going up Lattrigg in wheelchairs, zip wires, horse riding and swimming.

She told us a bit about the history of the Centre which was opened in 1976 and recently built a new revolutionary pool with the warmth of hydrotherapy to provide a complete sensory experience for users with or without disabilities.

She was thanked by Mary Peile.

The Speaker at the next meeting on May 2nd will be Gaynor Davis and anyone is welcome to come and listen to her often funny poems at 1:20pm in Loveday House, South End Wigton.

## EASTER COFFEE MORNING

in Christ Church Hall on  
Saturday 19th April 10am to 12noon

Stalls:

Cakes ~ Bric A Brac  
Fancy Goods ~ Cards

Competitions:

Easter Bonnet ~ Best Decorated Egg

RAFFLE

£ 1.50

ALL ARE WELCOME

## All Change for C&D

Claire and David at C&D Supplies have completely redesigned the shop layout and dropped all hardware lines in favour of concentrating on Pet and Fishing from now on.

They felt that the shop had a very confused image as half hardware - half pet or, to put it another way, they were fed up with doing things half heartedly and they both want to deliver the

best possible pet and fishing shop that they can for the community.

There will be a greater range of products on the shelf and a wider range of brands.

The shop now has more space to browse and Claire and David hope that their customers will view this favourably. Most hardware lines C&D Supplies used to sell are available in JayBee's.

## SILLOTH'S PET & SEA FISHING SHOP

All pets and wild birds catered for  
Most brands stocked or available to order  
Free Local Delivery

Good range of Tackle & Bait always in stock  
Black Lug, Mackerel, Sand eels, Squid and Peeler Crab  
Unbeatable deals on Rods n Reels

C&D Supplies, 17 Eden St, Silloth  
07919 924154 or 016973 32590 answerphone  
Email: sillothpetsupplies@yahoo.co.uk



## BEACON VETERINARY CENTRE

Open Surgeries  
Silloth 1:30pm-2:30pm  
Aspatia 6pm-7pm  
Appointments at other times by arrangement  
016973 20242

## Cushions & Covers,



Upholstery,  
Blinds,  
Curtains, etc.  
Whatever your furnishing needs,  
ring Irene on  
016973 31836

## ANIMAL & POULTRY FEED

(farm deliveries)  
(hay & straw available)



CALOR GAS AGENTS

(discounted prices)

(free local delivery & connection)

PREMIER CONVENIENCE STORE

open 6am-8pm Mon-Sat, 7am-7pm Sunday

Harrisons Store Ltd, Abbeytown

Tel/Fax: 016973 61231, M: 07972 805074



# New Exhibition at Soldiers in Silloth Museum



To commemorate the anniversary of the Great War we are putting on an exhibition to cover the Silloth involvement in that war.

We don't know how many lads joined the colours, only the ones who did not survive, from our war memorial.

We would like to display artefacts at this exhibition that may be held by descendants of those who served, such things as cap badges, medals, tobacco tins, postcards. Just about anything that may have been put away and forgotten in the back of drawers. We would like to borrow these and



include the name rank and unit served; the display will have the name of the donor on the loaned items.

The exhibition is not intended to glorify the events of 1914-1918.

Silloth did provide many

Sailors who became Soldiers in the Royal Navy Division, men with scant training for trench warfare and paid the ultimate price.

# Waver Wine Circle

The March meeting at Blencogo Village Hall was a White Wine Tasting Evening with a Chardonnay being the most acceptable wine tasted.

Eight people attended with four apologies for absence.

Mr and Mrs Stukins submitted a suggestion for the Circle's new logo. This was accepted by all present and agreed that it should be used on future correspondence, with the addition that the date of 1993 be added, this being the year in which the club was established.



There was the usual draw and nibbles organised by Stella Graham.

All meetings are held at Blencogo Village Hall. All will be welcome.

Contacts - Stella Graham on 016973 61393 or Stuart Jones on 016973 61006.

# Can You Help?



## Wanted from May onwards

A monthly deliverer is urgently wanted for our community paper in the following area: Links Close - 25 house in total.

In addition, if anyone can help in their area as a reserve for the regular deliverer to cover for holiday times, which may only be once or twice in a year, this would be greatly appreciated.

Contact Peter or Kath at the Solway Buzz on 016973 32180.

Flower Bee by Hannah Stalker from Silloth Primary School



## Silloth on Solway Community Shop

- \* Local people working for local causes \*
- \* All proceeds go back into the community \*
- \* Please continue donating \*
- \* Collection can be arranged \*

### S.O.S.C.S.

Open every day  
10am to 3:30pm  
Tel: 32452



S.O.S.C.S.  
12 Criffell Street  
Silloth

**North Lakes - Solway Holiday Village**  
**Relocate your caravan holiday home for FREE**  
 Relax in our heated indoor swimming pool  
**Holiday Caravan Sales**  
 NEW FROM £14,995, PRE OWNED FROM £4,999,  
 LODGES WITH HOT TUBS FROM £29,999  
 SHORT BREAKS FROM £99  
 CONTACT [mike@hagansleisure.co.uk](mailto:mike@hagansleisure.co.uk)  
 Site fees held until 2015  
 Tel 016973 31236 [www.hagansleisure.co.uk](http://www.hagansleisure.co.uk)

## D.A. Harrison HAULAGE & QUARRY OWNERS



- Haulage & Storage
- Sand, Gravel & Aggregates
- Readymixed Concrete
- Demolition & Site Clearance
- Licensed Waste Disposal Site & Skip Service
- Stevedores at Silloth Docks

Admin: 016973 42277 Transport: 016973 44000  
Skip Hire: 016973 31000 RMC: 016973 61777  
Fax: 016973 42210  
Waverton, Wigton, CA7 0AE

**Booking Essential**  
**016973 31438**  
[www.golfhotelsilloth.co.uk](http://www.golfhotelsilloth.co.uk)

**Easter Special Menu**  
Noon to 3pm  
& 6pm to 8:30pm  
Afternoon Tea  
3pm to 5pm

**Exciting New Menu**  
Launches on  
Friday 11th April  
Pop in and try it out!

- Breakfast
- Morning Coffee
- Lunches
- Traditional Sunday Carvery
- All Local Produce
- Afternoon Teas
- Evening Meals

# ATLAS

## CONCRETE LIMITED

Tel: **016973 32585** or **016973 42277**  
After Hours: **016973 61753**  
Waverton, Wigton, CA7 0AE

MANUFACTURERS OF ALL TYPES OF PRESTRESSED CONCRETE PANELS AND GENERAL PURPOSE INSTANT WALLING  
 SILAGE FARM AND INDUSTRIAL USE, HOLLOWCORE FLOOR UNITS AND 'T' BEAMS MADE TO MEASURE  
 CONCRETE POSTS & PANELS FOR INSTANT SECURITY WALLING

## DA Harrison & Company

Petrol ~ Diesel ~ Land Drainage Pipe  
**Water Pipe & Fittings**  
 Coppins Garage, Waverton, Wigton  
 Tel: 016973 42277

# SOLDIERS in Silloth

## Toy Soldier Experience

### Fantastic for Families!

Open: Tues-Sun  
 Admission: Under 16 - £1. Adults - £2  
 Family ticket (2 adults 2 children) - £5  
 Criffell St, Silloth, CA7 4BZ  
[www.soldiersinsilloth.co.uk](http://www.soldiersinsilloth.co.uk)



# Lambretta Club Stop Over at Stanwix Park



Over 200 members of the Lambretta Club Great Britain (LCGB) arrived in Silloth on Saturday 5th April for a Rally at Stanwix Park. Accommodation at the park was fully booked, and the Park are looking forward to holding their first Lambretta Club event.

The annual 'Coast to Coast' event, held by the LCGB for over twenty years, saw Lambretta Club members from all over the UK, including groups

from Southampton, Dorset and London, ride up to Seahouses in North East England, to meet up for a pre rally evening on Friday 4th April.

Riders set off from Seahouses Lifeboat Station at 10am on Saturday morning for the 150 mile ride across to Silloth on their 40 to 60 year old machines.

Taking in Holy Island, before travelling down the scenic A7 for a lunch stop at Cross Keys Hotel,

Canonbie, scooters arrived in Silloth mid afternoon on the Saturday.

They ended their Coast to Coast rally in Silloth with a fantastic evening of entertainment and celebrations in the Dunes Cabaret Bar on Stanwix Park. A great night was had by all and Stanwix Park look forward to welcoming them back in the future.

The riders rode off home on the Sunday damp, sore and happy.



# A Story from 1964! Blackdyke Level Crossing Accident



Crossing Keeper Margaret Gass holding the broken section of railway crossing gate

Report by:  
John N.M. Charters

Shortly before the closure of the CLASS 'C' Silloth branch line on September 7th 1964, a near-fatal accident at Blackdyke Halt and level crossing was only averted by the quick thinking of Crossing Keeper Margaret Gass, in office from 1962.

On the evening of Tuesday August 18th 1964 Margaret had closed the gates across the road and set her down distant signal to all clear, for the 9:25pm diesel unit (ex-Carlisle), which had just pulled into Abbeytown and was not scheduled to stop at Blackdyke. She had just returned to the Keepers cottage when a loud noise and splintering of wood occurred. On dashing out she saw that 16 year old farm worker James Ronald Kerr of The Crofts, Silloth had gone through the east level crossing gate on his motorcycle, with both himself and the machine lying on the track.

Margaret decided to move the unconscious Kerr from danger, as she knew the train would soon be upon them. This was difficult as he was heavy; the machine she

could not move.

Margaret then ran across to the ground frame on the opposite side and put her signal to caution. She could see the trains headlights in the distance, so ran up the line waving her arms and shouting; fortunately the driver had spotted the signal at 'Caution' and pulled up just short of the obstruction, but passed over the place where Kerr had lain.

The motorcycle was removed from the track and the incident reported

at Silloth. The ambulance was called and Kerr was reported to be suffering from head injuries, Margaret told the 'Cumberland News' and other journals.

Margaret said "If the crash had happened a few seconds later the train would have passed the signal and I might not have been able to save him."

This brave, unassuming lady who got no reward for her heroism passed away in December 2010 at Carlisle in her 78th year.



Jaws Bee  
by Scott Wilson from  
Holm Cultram Abbey School

## SILLOTH RUGBY CLUB

Available for Private Functions

- Birthday Parties •
- Engagements •
- Weddings • Christenings •
- Fund-raising Dances •

Comfortable, modern Lounge Bar  
Suitable for small or large parties

Telephone Christine on:  
**016973 32299**

For further details or to book

## CARRS COACHES



Coach & Minibus Hire,

Tours & Excursions

Tyres, Servicing & Repairs

Tel: 016973 31276

## WINTERS



Newspapers  
Magazines  
Sweets, Rock Novelties  
Greetings Cards  
Postcards  
Gifts, Toys  
Faxing & Photocopying

Eden Street,  
Silloth-on-Solway  
Shop: 016973 31323  
PO: 016973 32957

## West Silloth Motors

Motor Vehicle & Body Repairs



MOT TESTING STATION  
for Cars, Vans & Motorhomes

Breakdown & Recovery Service

Free Vehicle Collection & Delivery Service

Open Monday to Saturday

Diagnostics

Tel: 016973 32833 ~ Fax: 016973 31478

Email: mark@WestSillothMotors.co.uk

Causewayhead Garage, Causewayhead,  
Silloth, CA7 4JG

We accept all major credit /debit cards

Portraits and Commercial Photography  
**Photography by Peter**  
Tel: 016973 32180

## The Station Tearoom

Where you can enjoy home made cakes, scones, soup, and cream teas with delicious freshly ground coffee.

Station Road, Silloth  
Tel 016973-31845



# Monday Luncheon Club



Report by:  
Laurence Marshall

We held our weekly luncheon on 6th April at the Community Hall and celebrated a special birthday. Our senior member Mrs Dorothy Ross reached the grand age of ninety-six. The birthday cake was provided by Sheona Nicoll which we all enjoyed and a good day was had by all.

Top: the Monday Luncheon Club members

Bottom: Dorothy Ross with her birthday cake



# Silloth & District Pensioners Coffee Morning

Report by: Pat Froggatt

Silloth & District Pensioners held their April Coffee Morning at the Recreation Hall off Eden Street on Saturday 5th. The various stalls did a good trade and the raffle was well supported.

The Committee had provided tea, coffee, scones, jam and biscuits which everyone seemed to enjoy. As usual there was a buzz of conversation in the room mingled with laughter - which it is always a pleasure to hear. The whole morning was enjoyable for all who attended.

The raffle was drawn and the lucky winners were: Mrs Baker, Doreen Matthews, Arthur Bragg, Davina Walton, Pat Froggatt, Jerry Thorogood, Margaret Peach, Doreen Carruthers, Margaret Gate & Diana Shaw.

Maureen Irving announced the trip this year would be to Southport and that tickets would be available at the May Coffee morning. She also announced that Margaret Durham was arranging a trip to the theatre in Sunderland to see The Lion King and that the ticket price for the theatre would be £50 (anyone interested in this to contact either Maureen or Margaret)

The Committee would like to thank everyone who supported us.

The next coffee morning will be on Saturday 3rd May.

# Police Warn: Lock It or Lose It



Cumbria Constabulary are turning their attentions to residential areas as part of their annual acquisitive crime campaign, warning the public to be vigilant and take simple measures to protect and secure their property.

As clocks change bringing in longer daylight hours, Police are warning the public to lock their doors and windows or risk losing their possessions.

In 2013, there were 7,977 reported incidents of an acquisitive crime type in residential areas in Cumbria. This is an increase of just over 4% from 2012 where there were 7,643 reported incidents.

Inspector Jon Sherlock, of the Constabulary's Community Safety Unit, explains: "We hope that this campaign will encourage people to take some simple steps to ensure that their property and belongings remain in their possession and that they don't become victims of crime. As the statistics show, acquisitive crime has increased in residential areas. Due to improvements in security, our homes and buildings have never been more secure. Too much acquisitive crime however is opportunist, offenders entering through unlocked doors and open windows. The simple steps of locking doors, windows, outbuildings and not leaving expensive equipment on show can be the most effective deterrents. I can't emphasise enough the need to take these simple steps

and a routine when leaving the house or before going to bed. We appreciate the need to open windows in warmer weather; however modern designs allows some security with the windows on a latch, don't invite thieves into your home. On leaving your property ensure the doors and windows are locked and if away for an extended period, notify a neighbour. The image of a thief with a crow-bar breaking into your home, is in 2014 more commonly replaced by someone walking along a row of terraced houses trying every door handle, entering and stealing from the unfortunate home owner who didn't lock their door, don't let that be you. We want to lower the number of victims in residential communities, but we need everyone's help to do this. By following some simple crime prevention advice people can significantly reduce the risk of burglary. If anyone has any concerns around acquisitive crime or has suspicions around stolen property, I would encourage them to call Cumbria Police on 101."

Police and Crime Commissioner Richard Rhodes said: We all need to take these simple steps to guard against the risk of burglary, and be mindful that opportunistic thieves may be operating in our areas. It can take an opportunistic thief less than two minutes to commit burglary. To help reduce the risk, people should read the important crime prevention information provided by the police."

For more information about protecting your property and belongings, please visit [www.cumbria.police.uk/securehome](http://www.cumbria.police.uk/securehome). If you see anything suspicious in your area, please contact Cumbria Police on 101.

**STANWIX PARK**  
SILLOTH ON SOLWAY

*We've got the lot!...*

Heated swimming pool, gym, jacuzzi, sauna, steam room, ten pin bowling, soft play, family entertainment, adult cabaret, wifi, Sky sports & BT sport!

**April/May leisure memberships, adult (16-60yrs) - £30, couple - £50, child (5-15yrs) - £11, senior (over 60) - £17.**

**Entertainment**  
Live Cabaret in the Dunes Bar includes: New England, Fabulous Picasso Brothers, Leroy & The Flicks, Josh Adams plus much more!

**Family Entertainment in The Sunset Inn every night from 7pm.**

*Day Passes*  
FROM  
22nd April  
£4.00 - Adult  
£3.00 - Child  
*prices increase over weekends & school hols*

[www.stanwix.com](http://www.stanwix.com) | 016973 32666  
Stanwix Park Holiday Centre, Greenrow, Silloth, Cumbria, CA7 4HH

**West Cumbria age UK**

**Knit, Natter, Stitch & Chatter!**

Whether you're confident with pins and needles or a complete beginner ...

**Come and join our friendly group!**

Every Wednesday, starting 9th April at Silloth Local Links 1.30pm - 3pm

**Contact:**  
Barbara or Margaret 016973 31944  
Local Age UK Office: 016973 42279  
Age UK Helpline: 08443 843 843

Registered Charity Number 112204

**FINEST BANGLADESHI CUISINE TAKEAWAY MENU**

**SOZAL**

Spicing up the Solway  
Welcome to Mr Sukur Ali's Sonali Bangladeshi Takeaway.  
Enjoy the spicy delights of traditional Asian cuisine brought from Sylhet to Silloth specially created for your enjoyment by a team of award-winning chefs. Mr Ali is bringing curry to Cumbria and is confident that his new dishes will not disappoint. So indulge yourself from our mouthwatering menu and savour the delights of Asia here on the Solway

PHONE:  
**016973 32525/9**  
31 Wampool Street  
Silloth on Solway  
Cumbria • CA7 4BN  
**Open 5pm-11pm**



# New Book by Local Children's Author

Bella Hart brings an imaginative new children's book to life.

'Jacob & Emily Discover Ancient Fantastikoland' tells of siblings' adventure during holiday.

Siblings Jacob and Emily, like most children, have always had a thirst for adventure. This thirst is more than quenched when they embark on their latest and greatest adventure. Author Bella Hart invites readers to journey into Fantastikoland in her new book, 'Jacob and Emily Discover Ancient Fantastikoland': First in the Jacob & Emily Adventures Series).

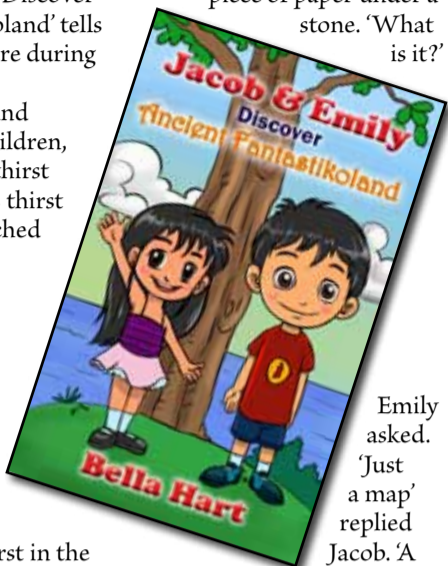
Hart's story begins with Jacob and Emily waking up to find a new lake outside their house. Intrigued, the two embark on a great journey to discover whatever else, besides the lake, may have changed outside. Waving goodbye to the 'guardians' they set off. Along the way, they meet a Chinese washerwoman, and encounter various animals including a stray dog and many strange characters.

Inspired by the imagination of her grandchildren, Hart is hopeful that her story will appeal to children and adults.

An excerpt from 'Jacob & Emily Discover Ancient Fantastikoland':

"Jacob and Emily went to sleep under an olive tree with the warm breeze carrying the beautiful fragrance of

herbs from the mountains round about. When they woke up, Jacob noticed a piece of paper under a stone. 'What is it?'



Emily asked. 'Just a map' replied Jacob. 'A treasure

map?' cried Emily. 'Don't be silly, Emily. There's no such thing...ing. Wait a minute! There's a cross on it.' 'I told you' said Emily haughtily 'It's a treasure map.'



One of the many illustrations in the book which can be coloured in

"Jacob and Emily Discover Ancient Fantastikoland" By Bella Hart  
Hard cover 15cm x 21cm (6 x 9 inch 198 pages) ISBN

9781491890837 is £18  
Paperback 15cm x 21cm (6 x 9 inch) 198 pages ISBN 9781491890844 is £8.99  
E-book ISBN9781491890851 available at Amazon and Barnes & Noble  
In UK, buy direct from BellaHart.co.uk

### About the Author

Bella Hart spent most of her life in Northumberland England at the helm of the family business. After two years in Greece doing voluntary work, she retired to Silloth on the Solway Coast and spends several weeks each year with her grandchildren in Nafflio, Greece. She has battled with Multiple Sclerosis and Breast Cancer and has come out on the winning side.

## Competition for Children aged 7 to 11 years to Win This Book

This is easy - just tell the Solway Buzz the funniest thing that has happened in your life, or to somebody you know. Open to children aged 7 to 11 only.

Post or email your entry to the Solway Buzz to arrive by 12th May 2014 with your name, postal address and age, our address is on page 10. The judges decision is final.

Cub Bee by Robbie from Holme St Cuthbert School



# Jolly Tots Visit Gincase



Report & Photo by: AnneLouise Rothwell

Jolly Tots Toddler Group enjoyed a wonderful trip to the Gincase in March.

The group had been fortunate to receive a grant from Silloth on Solway Community Shop and decided to visit the farm park and enjoy a picnic together.

Lots of fun was had in

the playbarn, the children helped to bottle feed the lambs and said hello to the other animals before picnic time which included birthday cake and singing happy birthday to one of the children. Then there was time to play outside and visit the animals again!

Jolly Tots Toddler Group meet on Monday mornings during term time

in Christ Church Hall on Solway Street from 10am to 11:15am.

Babies, toddlers and their parents/carers are warmly invited to come along, there's lots of playtime, coffee, chat and a friendly welcome.

For more information contact AnneLouise Rothwell on 016973 31413 or just come along and say hello.

## SOSCS Give Grants Totalling £4,400

At a recent Committee meeting, Silloth on Solway Charity Shop agreed to make the following donations to local worthy causes.

Silloth First Responders	£500
Silloth Kite Festival	£500
Tots & Toddlers	£400
Silloth Youth Club	£400
Silloth Football Club	£400
Silloth Vintage Rally	£300
Silloth Netball Club	£500
Christ Church with St. Pauls PCC	£500
Silloth Tennis Club	£400
Silloth Community Tec. College PTA	£300
Friends of Silloth Primary School	£200

Grand Total donated to local applicants of: £4,400

Please keep on donating your unwanted goods to the shop so that we can continue to raise the funds to make the above grants to our local community.

**ROBINSON**  
Car & Commercial

24Hr Mobile: 07999 017769  
Tel: 016973 31940

**CAR - VAN - 4X4**

Diagnostics  
Repairs  
Servicing  
Body Work  
Accident Repair

**BUS - COACH - TRUCK - TRAILER**

Diagnostics  
Fleet Maintenance Contracts  
Inspections  
Servicing  
Repairs  
24 Hr Assistance  
MDT Steam Cleaning  
Mobile & Workshop Service  
VOSA MDT Preparation & Booking

**PLANT - AGRI**

Mobile & Workshop Service  
Servicing  
Repairs  
Breakdown Assistance

MDT'S ARRANGED CLASS 4 - 5 - 7  
CAR & VAN RECOVERY SERVICE  
The Control Tower, Silloth Airfield, CA7 4NS

**SCOTT'S**  
THE BEST FOR REST

Single Beds from £99  
Double beds from £149  
Pine beds from £99  
Metal beds from £89  
Full range of mattresses in stock  
Caravan size mattresses in stock

016973 31224

**KL EXPRESS**  
Chinese Takeaway

Open at 5pm  
Every Day

A Wide Variety of  
Dishes for Every  
Taste

Telephone Orders  
016973 33033  
43 Eden St, Silloth

**COMPUTER PROBLEM? No Problem**

We are your local specialists for:

Internet Problems  
Printer Problems  
Wireless Networking  
Computer Running Slow  
Advice for New Computers

**Mark Hansford  
Computer Services  
016973 32089**

**MARKLEY**  
IT CONSULTANCY & SECURE STORAGE

**STORAGE & PARKING**

CCTV Secured Storage  
Containerised Storage  
Business Outlets  
Indoor & Outdoor Caravan & Vehicle Storage

**IT SERVICES**  
Home & Business Repairs & Upgrades, Laptop's & PC's

**MARKLEY.co.uk**  
Tel: 016973 33820  
07720 560595



# Young Writers - Enter Now to Win a £1,000 Prize

£1,000 Prize for cumbrian students – and a chance to have THEIR WRITING published

The second annual Hunter Davies Award for Young Writers competition is now open for any student aged 16-21 who attends a Cumbrian school, college or university. The winning entry will receive £1,000 – half to go to the student's library and the other half to the winning young person. They'll also get the chance to have their entry published in Cumbria Life magazine.

This year, the title of the writing will be 'My Best Friend' and should be written as a profile of the best friend or an interview.

"Yes, it's a corny title" said Hunter "but that's the point. It's slightly ironic, leaving it open to the student to make of it what he or she wants although it does need to be a piece of non-fiction writing like a reportage or journalism than a school essay. It can be personal, in the first or third person, amusing, informative and descriptive, with observations and opinions, with or without quotes and dialogue. The best friend can be anyone, old or young, dead or alive and could even be a pet. The main purpose is to encourage writing skills – which after all everyone needs in life these days for work and for pleasure, now that we all seem to spend lots of our time communicating in various ways."

The judges are Steve Matthews, author, publisher and owner of Bookends and Bookcase in Carlisle,



Hannah Sowerby, 17 from Appleby Grammar School won the inaugural prize last year

Cumbria Life Editor Richard Eccles and headed by Hunter Davies.

Hannah Sowerby, 17 from Appleby Grammar School won the inaugural prize last year. She said "I was overjoyed to hear I won and it brightened up my days of endless IT coursework! I would recommend any student to enter. The money helped with driving lessons and the school library was able to purchase some new books."

The competition is organised by Cumbria Community Foundation. For further information contact Annalee Holliday on 01900 825760 or visit their website [www.cumbriafoundation.org](http://www.cumbriafoundation.org).

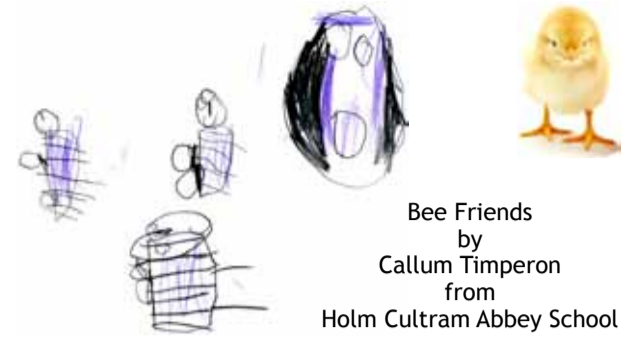
org which has full details of the rules. The deadline for entries is 1st July 2014.

Annalee Holliday, Grants and Donor Services Officer said "This is the second year of the competition and we're

delighted to be working with Hunter again. The prize will provide an incentive for a number of young aspiring writers to get creative and shine a light on their writing skills"



Hunter Davies



Find us: [facebook](#) [twitter](#) [ticketweb](#)

THURSDAY 4TH - SUNDAY 7TH SEPTEMBER

## The Silloth Music Beer Festival 2014

Appearing Sat 6th Sept 7pm  
Tickets £22 (£20 in advance)

Appearing Fri 5th Sept 7pm  
Tickets £22 (£20 in advance)

**ROY G HEMMINGS**

See reverse for full weekend line up or visit: [sillothbeerfestival.co.uk](http://sillothbeerfestival.co.uk)

WEEKEND FESTIVAL PASS £48

**Sandra Hickebottom**  
MCFHP DipFHT MAFHP

**Foot Health Professional**

Flexible Home Visits  
All Foot Problems Treated  
Corns, Callous, Ingrown Toenail, Verrucae, Diabetic Foot, Nail Cutting  
Fully Qualified and Registered For 18 Years  
Mob 07951 312513

**Pink Poodle**

**Grooming Salon**

Fully Qualified Grooming Specialist

Sunflower Cottage  
Blitterlees, Silloth CA7 4JN  
Tel: 07519 223364  
[marian.sheppard@btinternet.com](mailto:marian.sheppard@btinternet.com)

Come & join us at  
Holm Cultram Abbey C of E School

## Community Lunches

12.30pm (prompt) - 1.15pm

~ Friday 23<sup>rd</sup> May 2014 ~  
~ Friday 20<sup>th</sup> June 2014 ~

£3.50 for two courses plus tea/coffee  
Take-aways & free local delivery available!

There are limited places so please telephone (016973) 61261 to book a seat or for more information.

### Weekend Event Listings

Thursday 4th September 7pm - Midnight

New England  
Secure Unit  
Buzz Elliott  
Tickets £10\*

Friday 5th September 7pm - Midnight

Roy G Hemmings Tribute to Motown  
Five and Dangerous  
The Misfitz  
Advance tickets £20 or £22 on the door\*

Saturday 6th September 12pm-5pm

Cindy Hoten  
Joe McCorrison  
Guilty as Sin  
Tickets £9 for Adults or £11 on the door £2.50 for Children\*\*

7pm-Midnight

The Quireboys  
AWOL  
The Robin Pierce Band  
Advance tickets £20 or £22 on the door\*

Sunday 7th September 1pm-6pm

The Jam'd  
Rockaoke  
Advance tickets £9 for Adults or £11 on the door\*\* £2.50 for Children\*\*  
Family Ticket £15 (2 adults, 2 children)

\*subject to availability  
\*\*Children are welcome with responsible adults on Saturday and Sunday Afternoon.

Tickets Available From  
Carnegie Theatre, Workington 01900 602122  
Winters Newsagents, Silloth (Cash or cheque)  
[www.ticketweb.co.uk](http://www.ticketweb.co.uk)  
For accommodation enquiries contact  
Silloth Tourist Information Centre on 016973 31944

Please note that as this is a Beer Festival and admittance after 7pm is strictly limited to over 18's. Proof of age may be requested.

Silloth Music Festivals Ltd. Company No 8680036

GREAT VALUE WEEKEND TICKETS ONLY £48  
Silloth Music & Beer Festival reserve the right to change advertised band listing. Check website for full festival details.  
[www.sillothbeerfestival.co.uk](http://www.sillothbeerfestival.co.uk)



# Sarah Goes It Alone

After 12 years working for an established firm of accountants, Sarah Seavor (nee Reilly), who lived and grew up in Silloth, has set up her own firm of accountancy, tax and business advisers!

Sarah said: "I set up SeavorChartered to provide cost-effective accountancy and tax services to clients who want a friendly, reliable and plain English approach. I offer personal, face to face advice to individuals and businesses and I have already begun working with clients in and around Cumbria. I started working in accountancy and tax, for a practice based in Dalston in 2002 where I spent the next twelve years learning my trade. With the relationships and experience I had gained I felt the time was right to take the next step and set up on my own."

Sarah runs her business from her home in Carlisle where she lives with her husband Graeme, Financial Controller of Steadmans at Caldbeck and their daughter Pompeya who has recently turned two years of age.

She said: "After beginning work in the accountancy sector for the first time in 2002, I pretty quickly found that I was good at it and that it was a career I wanted to pursue. I was awarded the 'Employee of The Year'

award at the Cumbria Business Awards in 2007. (A feature which was in the Solway Buzz at the time). This was awarded to me for my ability to provide an outstanding level of service and for going that extra mile to help my clients achieve their personal or business goals. My twelve years experience means that I have acted for and supported many clients ranging from individuals and self-employed businesses to partnerships and small and medium sized limited companies."

"The freedom to offer high standards of service in my own style was one of the factors that attracted me to working for myself. Being a member of the Chartered Institute of Taxation (CIOT) and Association of Taxation Technicians (ATT), means my clients can have absolute peace of mind that their affairs are dealt with



Sarah Seavor in her new office

completely and correctly and they will have direct contact with me at all times. That's the great benefit of setting up on my own - clients will not get passed around various people for different tasks. They will always get to talk to their own accountant - me!"

Find out more at SeavorChartered's website at [www.seavorchartered.co.uk](http://www.seavorchartered.co.uk).

If you would like to speak with Sarah about you or your business's accountancy and tax affairs, Sarah offers a FREE initial meeting. You can contact Sarah on 01228 492729 or 07712 218540 or email [sarah@seavorchartered.co.uk](mailto:sarah@seavorchartered.co.uk).

# Judge Michelle Temple



Sue, Malcolm, Michelle and Gladys Temple

The Queen has appointed Michelle Jean Temple as a District Judge for Teeside.

Judge Brodie led the Ceremony at Teeside Combined Court where Michelle took the Oath of Allegiance to the Law and another to the Queen.

She was welcomed by Mr Grey, a Barrister from Trinity Chambers and by a representative of the Solicitors of Teeside Area. Michelle was born at Kendal but started school at Abbeytown Infants School then Wigton Thomlinson Junior School. She then moved to Nelson Thomlinson School before

going to University College Oxford where she gained a 2.1 Honours Degree in Law in 1991.

The next part of her career was to Lincolns Inn. She moved to Broadchare Chambers Newcastle Quayside in 1993 then she moving to Trinity Chambers where she built a formidable reputation specialising in Chancery Law and Civil Disputes. She has been an Assistant Circuit Judge for the Northeast Area before being appointed this week as a District Judge for Teeside Combined Court.

Her husband James Mackie and his parents were present for the Swearing in

Ceremony together with her proud parents Malcolm and Gladys Temple and her eldest sister Susan Temple who is a Senior Lecturer at Cumbria University. Unfortunately her other sister Tracey Armstrong was unable to attend from her work at Wigton Community Hospital.

Malcolm was the local village Bobby at Abbeytown and both he and Gladys keep their ties with the village as he is Treasurer for the Abbeytown Indoor Bowls and Gladys attends Holme Cultram Abbey Mothers Union. Michelle and James are the proud parents of 4 year old Thomas Mackie.

## SeavorChartered

Accountancy, Tax & Business Advisers

- Free initial consultation.
- Qualified Chartered Tax Adviser.
- Accounts preparation.
- Tax Return preparation.
- Tax planning.
- VAT Return preparation.
- Payroll services.
- Limited company set up.
- Probate and estate work.
- HM Revenue & Customs investigations.

### Contact Sarah Seavor:

Tel: 01228 492 729  
Mobile: 07712 218 540  
Email: [sarah@seavorchartered.co.uk](mailto:sarah@seavorchartered.co.uk)  
Website: [www.seavorchartered.co.uk](http://www.seavorchartered.co.uk)



Frosty Snowy Bee

by Zaynab

from Holme St Cuthbert School



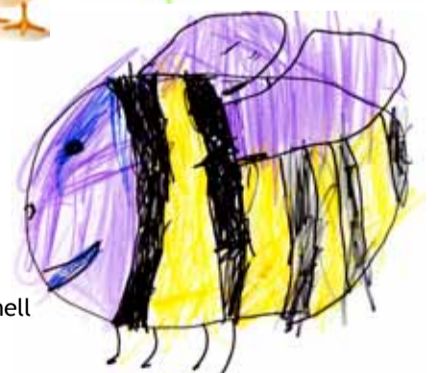
Keyboard Bee by Kirsty Whitfield from Holme St Cuthbert School

Bee by Keegan Parker from Holm Cultram Abbey School



Big Fat Bee by Willow Armstrong from Holm Cultram Abbey School

Donna Bee by Lucy Mitchell from Abbeytown



## Silloth Group Medical Practice



Opening Times: 8am - 6:30pm

Tel No: 016973 31309

Fax No: 016973 32834

Book your next Appointment or order your Repeat Prescription with

### PATIENT ACCESS

Manage your APPOINTMENTS online, at home or work  
View  
Book  
Cancel

Request your PRESCRIPTIONS online  
View  
Request  
Check Progress

Ask at reception for details or visit:

[www.sillothgroupmedicalpractice.nhs.uk](http://www.sillothgroupmedicalpractice.nhs.uk)

Get Our: **FREE PATIENT ACCESS APP**

## Non-Commercial Tourism Websites

- [solwaybuzz.co.uk](http://solwaybuzz.co.uk)
- [sillothgreen.co.uk](http://sillothgreen.co.uk)
- [sillothonsolway.co.uk](http://sillothonsolway.co.uk)
- [sillothgolfclub.co.uk](http://sillothgolfclub.co.uk)
- [vintagerally.co.uk](http://vintagerally.co.uk)
- [sillothbeerfestival.co.uk](http://sillothbeerfestival.co.uk)
- [silloth-on-solway-tc.gov.uk](http://silloth-on-solway-tc.gov.uk)
- [visitcumbria.com/wc/silloth](http://visitcumbria.com/wc/silloth)
- [soldiersinsilloth.co.uk](http://soldiersinsilloth.co.uk)
- [solwayshorestories.co.uk](http://solwayshorestories.co.uk)
- [solwayplain.co.uk/silloth1.htm](http://solwayplain.co.uk/silloth1.htm)
- [facebook.com/sillothgreen](https://facebook.com/sillothgreen)
- [facebook.com/silloth-carnival](https://facebook.com/silloth-carnival)

Any other suggestions of sites useful for our visitors, please send them to the Buzz at: [office@solwaybuzz.co.uk](mailto:office@solwaybuzz.co.uk)

## Silloth-on-Solway Hash House Harriers

### "The Drinking Club With A Running Problem"

Invite you to join us on our Inaugural Run Weekend May 9th to 11th 2014

This is a group aimed at any level of fitness, we enjoy getting together to run or walk around the local area.

We also like to partake in an alcoholic beverage while doing this.

It is purely a social event and is non-competitive.

For more information contact either Shelley on 07712 468174 or Adrian on 07970 502631 or e-mail [sweetbreads@btinternet.com](mailto:sweetbreads@btinternet.com)



**Children's Centre**

Opening Hours:  
Monday 9:30am to 12:30pm fortnightly for the Childminders group also  
Monday 1pm to 3 pm term time  
Tuesday 1pm to 3 pm term time  
Wednesday 9:30am to 12:30 for Tots n Toddlers

Open at other times when the rooms have been booked, if you wish to use the Centre please call to make arrangements. We are more than happy to show people around, chat on a one to one basis or in small groups.

Contact Numbers:  
Silloth CC - 016973 31230  
Aspatia CC - 016973 22777  
Wigton CC - 016973 49555

**Arthritis Support**

Wigton Area Arthritis Support Group meet on 1st Friday each month at Loveday House, South End, Wigton @ 1:30pm, details from Gladys 016973 43964

**Silloth Tots/Toddlers**

Silloth Tots & Toddlers meet in the Children's Centre, Silloth and is open to all children aged from 0 to 4 accompanied by a parent/carer. Sessions are on: Wednesdays: 10pm to 11:30am term time only  
Entry is £1 per family and this includes refreshments  
All Welcome  
Call in for a friendly chat

**Abbeystown Library**

Abbeystown mobile library will stop outside the Wheatsheaf Inn at 1pm for an hour every Monday

**Christ Church**

For Christ Church baptisms and other church related business please contact:  
Rev Bryan Rothwell  
The Vicarage, Wigton Road  
Tel: 016973 31413

**Civic Amenity Sites**

Operated by Cumbria County Council. tel: 01228 606060  
Maryport Tip, tel 01900 66922 open daily 8am to 6pm  
Wigton Tip, tel 016973 45617 open Tuesday, Thursday, Saturday & Sunday, 8am to 6pm

**Production Team**

Proprietor:  
Peter McRobert  
Barn Cottage  
Skinburness, CA7 4RA  
Tel: 016973 32180  
Email:  
office@solwaybuzz.co.uk

Editorial Content  
This is down to you, we can only publish items if you send them to us.  
When sending articles in, please supply a contact name and number in case something requires clarification.  
We will accept letters or emails, but we do prefer emails as we have to have your letters typed out.  
Published by:  
Peter McRobert with the support of the whole community and an army of volunteers.

**Football Training**

**Silloth Football Club**

**Eden Street Playing Field**  
under 7 years  
Wednesdays 4-5pm  
over 7s years  
Wednesdays 5-6pm  
**Men's Team**  
Wednesday 7pm to 8:30pm  
Open to boys and girls.  
Membership forms available from all coaches.  
Secretary: Stephen Hart 32706

**Karate Club**

From Monday 9th January Silloth Karate Club will be moving to Solway Community School Hall.  
under 12's 6:30 to 7:30pm  
12's and over 7:30 to 9pm  
NEW MEMBERS WELCOME  
For further details contact Stephen on 07811 761033

**Whist Group**

Age no barrier. Anyone interested please come along on a Tuesday at 1:30pm until 3:30pm, entry is £2 - if you require any more information please ring Susan Kenny on 016973 32450.

**Kickboxing Club**

The Kickboxing Club is held in Christ Church Hall every Thursday night from 6:30pm to 7:30pm. All welcome.  
www.solwaykickboxing.webeden.co.uk

**Kettlebell Fitness**

Kettlebell Total Body Blast is at Silloth Sports Hall every Wednesday night 7pm to 8pm  
Fridays 8:50am to 9:20am  
Rapid results, Unisex,  
Suitable for all levels of Fitness.  
To Book Call or Text Gayle on 07725 99 00 62

**Legs, Bums & Tums**

Legs Bums and Tums Cardio Mondays 9am to 9:30am at Silloth Sports Hall. For Men and Women. All Fitness Levels. Different routines, every week  
Step, Skipping, Body weight exercises.  
Just Turn Up!  
For more info Call Gayle 07725 990062

**Metafit Fitness**

30 Minute Body Weight High Intensity Training on Wednesdays in Wigton Market Hall at 5:30pm,  
Silloth Sports Hall on Wednesdays at 6:30pm Just turn Up!  
For more info Call Gayle 07725 990062

**Bridge Group**

Meet on Wednesday evenings from 7 till 9pm, at the Golf Club to play Duplicate. Information from mike.md@btinternet.com.

**Dates for the Diary**

**April**

19th Easter Coffee Morning in Christ Church Hall from 10am to noon, £1.50 all welcome

21st Family Laser Clay Pigeon Soot on Silloth Green

27th Solway Shore Walks (LW 6pm, height 0.4m); meet at Allonby (Twentyman's carpark) at 5:15pm.

**Breast-feeding Group**

Mondays 10am to 11:30am Wigton Bowling Club, West Road, Wigton  
Have a cup of tea and meet other breast-feeding mums. Support and advice is available from trained Breast-feeding Peer Supporters and from Health Visitors or Midwives. For more information call Wigton Health Visitors: 016973 66608

**Crafting Group**

Interested in crafting? come along to Silloth Crafting Group on Wednesdays from 1:30 to 3:30pm at the Methodist Church Hall. We are a well established group, friendly people with a variety of crafting talents-willing to share their knowledge. Enjoy the chat and learn from the other crafters, or just sit and chat.

**RNLI Shop**

SILLOTH LIFEBOAT STATION SHOP OPENING HOURS  
Saturday 11am - 4pm  
Sunday 11am - 4pm

Bank Holiday Sat 11am - 4pm  
Bank Holiday Mon 1pm - 4pm

Our shop is entirely staffed by volunteers and may not be open at the advertised times. We do apologise for any inconvenience that this may cause.

**Wednesday Bunch**

Silloth Evangelical Free Church, Eden Street Wednesday Bunch. at 5pm every Wednesday, (except in school holidays)  
Fun, bible stories, quizzes, craft, games for 5-11s

**Abbeystown Lunches**

Holm Cultram Abbey C of E School are providing Community Lunches every 2nd and 4th Friday of the month. Two courses and a drink for only £3.50! (we can deliver locally too!)

**Silloth Open Door**

Free Lunch 12noon - 1pm Every Tuesday in St Andrew's Hall (Opposite Co-op). Donations Welcome

**Ladies Fellowship**

Silloth Evangelical Free Church, Eden Street Ladies Fellowship starts Thursday, 26th September at 1:45pm. Thereafter alternate weeks. Warm fellowship, refreshments, and good speakers.  
All welcome

**May**

2nd Solway Shore Walks (LW 9:15am, height 0.7m); meet at Beckfoot (Mawbray Banks) at 8:45am

2nd Arthritis support Group meet at 1:30pm at Loveday House, Wigton, subject: Gaynor Davies Pottery

3rd Coffee Morning in the Recreation Hall with Silloth & District Pensioners

7th Parkinson's Group meeting in Wheyrigg Hotel from 11:45am to 2:30pm. Pill's & Parkinson's, all welcome

8th Blood Donor Session at Greenhill Hotel, Red Dial, Wigton 3pm to 7pm, Tel 0300 123 2323 up to the 7th to book an appointment

8th Causewayhead WI RESOLUTION MEETING  
Competition: to be decided

12th Silloth Town Council meet, 7pm in Community Hall

13th Holme Low Parish Council meeting in the Community Hall, Silloth at 7:30pm

14th Silloth Safer Stronger Community meeting in Local Links office from 3:30-4:30pm

15th Blood Donor Session at SCTC, Main Hall, Liddel St, Silloth, 3pm to 7pm, Tel 0300 123 2323 up to the 14th to book an appointment

17th Crunch Service in Skinburness Road Car Park from 8am to 9:45am

18th Plant, Produce & Craft Fair in Mawbray Village Hall from 10am to 4pm, tearoom open for lunches, teas, coffees & cakes

23rd Community Lunch in Holm Cultram Abbey School at 12:30pm, £3.50, to book tel: 016973 61261

23rd Annual MU May Market & Plant Sale at 6:30pm in Abbeystown

25th Silloth Green Day from 10:30am to 4:15pm inc. Mini Football Tournament

**June**

2nd Silloth Town Council meet, 7pm in Community Hall

6th Arthritis support Group meet at 1:30pm at Loveday House, Wigton, subject: Paul Gibson, arthritis 4

7th Coffee Morning in the Recreation Hall with Silloth & District Pensioners

7th Parkinson's Group meeting in Wheyrigg Hotel from 11:45am to 2:30pm. Don't give up on young people, all welcome

11th Silloth Safer Stronger Community meeting in Local Links office from 3:30-4:30pm

11th Causewayhead WI "Tales in Verse", Speaker: Joan Bennett, Competition: A Four line verse About W.I.

14th Crunch Service in Skinburness Road Car Park from 8am to 9:45am

15th Solway Shore Walks (LW 8:50am, height 0.3m); meet at Beckfoot (Mawbray Banks) at 8:15am

Do you have an event in the area bounded by Abbeystown, Mawbray, Silloth, Skinburness, if so please let us know.

**June**

20th Windows Week in Silloth by Solway Plain Artists

20th Community Lunch in Holm Cultram Abbey School at 12:30pm, £3.50, to book tel: 016973 61261

21st Windows Week in Silloth by Solway Plain Artists

21st Silloth Vintage Rally

21st Mini Football u'10s Tournament

22nd Windows Week in Silloth by Solway Plain Artists

22nd Silloth Vintage Rally

23rd Windows Week in Silloth by Solway Plain Artists

24th Windows Week in Silloth by Solway Plain Artists

25th Windows Week in Silloth by Solway Plain Artists

26th Windows Week in Silloth by Solway Plain Artists

27th Windows Week in Silloth by Solway Plain Artists

28th Windows Week in Silloth by Solway Plain Artists

29th Windows Week in Silloth by Solway Plain Artists

30th Windows Week in Silloth by Solway Plain Artists

31st Windows Week in Silloth by Solway Plain Artists

**July**

1st Windows Week in Silloth by Solway Plain Artists

2nd Windows Week in Silloth by Solway Plain Artists

2nd Parkinson's Group meeting in Wheyrigg Hotel from 11:45am to 2:30pm. Eden Valley Hospice, all welcome

3rd Windows Week in Silloth by Solway Plain Artists

4th Windows Week in Silloth by Solway Plain Artists

5th Windows Week in Silloth by Solway Plain Artists

5th Coffee Morning in the Recreation Hall with Silloth & District Pensioners

7th Silloth Town Council meet, 7pm in Community Hall

9th Solway Shore Walks (LW 4:35pm, height 1.5m); meet at Beckfoot (Mawbray Banks) at 4pm.

9th Causewayhead WI Safer Driving Speaker: Peter Logan, Competition: A Car (Toy or ornament)

16th Silloth Safer Stronger Community meeting in Local Links office from 3:30-4:30pm

19th Silloth Kite Festival

19th Crunch Service in Skinburness Road Car Park from 8am to 9:45am

20th Silloth Kite Festival

26th Abbeystown Carnival

Errors do occur in Dates for the Diary. Please check before attending an event.

Send Your Bees to the Solway Buzz There is a Bee Shortage and we Need Yours!

**August**

1st Arthritis support Group meet at 1:30pm at Loveday House, Wigton, subject: Outing to Pot Place

6th Parkinson's Group meeting in Wheyrigg Hotel from 11:45am to 2:30pm. NIA, all welcome

10th Solway Shore Walks (LW 7pm, height 0.5m); meet at Allonby (Twentyman's carpark) at 6:15pm.

12th Holme Low Parish Council meeting in the Community Hall, Silloth at 7:30pm

14th Solway Shore Walks (LW 9:50am, height -0.1m); meet at Beckfoot (Mawbray Banks) at 9:15am.

15th Theatre on the Green presents TREASURE ISLAND by the Rain or Shine Theatre Company at 7pm, Details TBC

16th Crunch Service in Skinburness Road Car Park from 8am to 9:45am

17th Silloth Beach Half Marathon @ 11am, also 10k race at 11:30am, book online by visiting www.q-buster.co.uk

24th Football Funday 1-5pm

25th Silloth Carnival



**September**

1st Silloth Town Council meet, 7pm in Community Hall

3rd Parkinson's Group meeting in Wheyrigg Hotel from 11:45am to 2:30pm. Sing along with Mary Kipling & her guitar, all welcome

4th Silloth Music & Beer Festival

5th Arthritis support Group meet at 1:30pm at Loveday House, Wigton, subject: allergy testing

5th Silloth Music & Beer Festival

6th Coffee Morning in the Recreation Hall with Silloth & District Pensioners

6th Silloth Music & Beer Festival

7th Silloth Craft Show

7th Silloth Music & Beer Festival

10th Causewayhead WI Cycling through Scandinavia to Russia, Speaker: Norman Godfrey, Competition: A Fridge Magnet

12th Solway Shore Walks (LW 9:25am, height 0.0m); meet at Allonby (Twentyman's carpark) at 8:45am.

13th Crunch Service in Skinburness Road Car Park from 8am to 9:45am



Please note that articles, letters and virtually all content of the Solway Buzz are contributed by YOU, the local community. The Editor reserves the right to control what is included, however, no responsibility whatsoever for the content of the Solway Buzz can be accepted by the Editor, or the Publishers.

Copy date for the June issue is: 1st May 2014

If your organisation has an event to promote or you have something to say, please note the next copy date.

Please let us know of any changes within this section

Copy Date







# Your Letters



Dear Buzz,  
As a founding member of SPAND and now a director of Cumbria Trust, I was interested to read Roy Ivinson's letter in the last Buzz. He makes an important point that low carbon energy generation is essential to reduce the build up of greenhouse gases, and the resultant sea level rise which could threaten parts of the Solway Coast. However, Roy appears to have misunderstood SPAND's (and Cumbria Trust's) position. Both organisations recognise the importance of low carbon energy generation and neither oppose nuclear power. It may very well be that nuclear power is needed alongside wind, solar, biomass, carbon capture and energy efficiency measures, if we are to prevent an irreversible rise in temperature. SPAND and Cumbria Trust are evidence-based organisations which rely heavily on scientific advice. As such both oppose the burial of nuclear waste in some of the least suitable geology within the UK. The Mercia Mudstone rocks beneath the Solway Plain were identified by the government-funded partnership as being potentially suitable. Yet a leaked draft report from the British Geological Survey shows that the area was correctly excluded on two counts, since the Mercia Mudstone is both an aquifer (a drinking water source) and prospective area for hydrocarbon exploration. The draft report was suppressed, and the published version had been irrationally altered to bring the Solway Plain back into consideration. There can be no scientific justification for this, and when challenged, no justification was forthcoming. It seems clear that when science gave the 'wrong' answer, it was ignored. In addition to this scientific manipulation, the Mercia Mudstone is

not sufficiently thick to form an effective seal, as experience in the north east Irish Sea has shown. Oil wells there show that around 600 metres of Mercia Mudstone is required to prevent fluids leaking to the surface. The thickness in the Solway Plain is much less, at 3-400 metres. This is simply not sufficient to trap radioactive fluids and gases and prevent them from reaching the surface, with potentially disastrous consequences. We know a vast amount about Cumbria's geology, enough to be confident that West Cumbria should be excluded from the search for a burial site. Over £400m (a billion pounds in today's money) was spent by Nirex to reach that exact conclusion in the 1980s and 90s. Perhaps the government is hoping that enough time has passed to be able to quietly forget about those inconvenient results. SPAND and Cumbria Trust won't let that happen.

Geoff Betsworth  
Cumbria Trust (Director)

Dear Buzz,

When visiting Silloth recently, I was given a copy of your publication for April, on page 7 of which was a picture I took at Silloth Railway Station in July 1964. Two months before closure on September 7th 1964 the summer passenger time table consisted of a steam hauled service (save for the first and last trains which were diesel units). The train pictured was a late Saturday afternoon departure. This picture was one of several I took at Silloth and stations along the line, I have some pictures of the last passenger train on whose engine myself (assisted by Locomotive Inspector, the late George Gordon) hung a 10/- (50p) wreath on the lamp bracket of CLASS 4, 2-6-0 No 43139 on platform 8 at Carlisle Station.

George Gordon later told me that evening was the saddest experience in his entire railway service. James Lister was our driver and Michael Bulman Fireman, with Archie Brand, Guard. The last train was the 6:55pm from Carlisle, on Sunday September 6th 1964. On September 7th (official closure date) the furniture, chairs, platform seats and desks were removed by a special train. Helping with this were Signalman Tommy Ashton, Porter Len Huddart and others under the supervision of relief Stationmaster Tommy Powley, who had been in charge of Silloth (with Abbeystown) since July 1964, following departure to Irvine, Ayrshire of Leonard Woolley Station Master/Goods Agent at this CLASS 1 Station since 1960.

John N. M. Charters

Dear Buzz,

When I held the Cabinet portfolio for Highways and Economy under the last administration at Cumbria County Council (CCC), officers proposed that we implement "On Street Car Parking Charges" throughout Cumbria. I strongly opposed this, and the proposal was withdrawn. Now CCC is under a Labour/Liberal Democrat administration. At the recent CCC budget meeting, all Conservative Councillors voted against the proposal to implement "On Street Car Parking Charges" throughout certain towns within Cumbria". Unfortunately we were out voted by the administration. Thus "On Street Car Park Charging" will be imposed and implemented across Cumbria this year. The proposal is to have pay and display parking in the following towns in Allerdale: Workington, Maryport, Cockermouth, and Keswick. My concern now is that this will most certainly

spread into other towns over Cumbria, incurring extra expense to all local residents, especially the Rural areas. In my opinion this is grossly unfair for people living in rural communities who need to travel to town on a regular basis to buy their shopping, or work. The implication of this further burden to the motorist will most likely force shoppers out of the town centres which in turn will have a detrimental effect on the smaller retail businesses. Many Rural bus services are also being withdrawn! This underlines the requirement to use private cars. I will continue to oppose the introduction of On Street Parking charges. This tax will discourage people from coming to places like Silloth for a day out.

Cllr A J Markley  
Mayor

Dear Buzz,

I would like to say a big thank you to everyone who came to the aid of my mum (Jean) when she fell in Eden Street (on 25th March). The couple who called 999, first responders (inc Nic Szandurski & Gary Winter) & ambulance crew you are all wonderful, kind for phone calls, visits, kind wishes and flowers. Mum is recovering at home - bruised, stitched, sore and stiff but getting there. Thank you all,

Jennifer Adam

Dear Buzz,

Alan and family of the late Barbara would like to thank friends and neighbours for their kindness and sympathy cards on our sad bereavement, also £157.50 was donated to the stroke association. Thanks to Margaret Gate for her kind words at the service, also Mr Hugh and Joan Scott for their guidance and help.

Alan Steele

# Cumbrian Reads

Supported by  
Anne Carruthers  
Cumbria Library Service

Why not curl up with a good book?

## Celebrate Cumbria's 40th birthday

Take Cumberland and Westmorland. Add a dash of Lancashire and a sliver of Yorkshire. Put it all together and what have you got? Cumbria - the country's second-biggest county. Book reviews for this edition are from Books that are either set in Cumbria or written by Cumbrian authors.

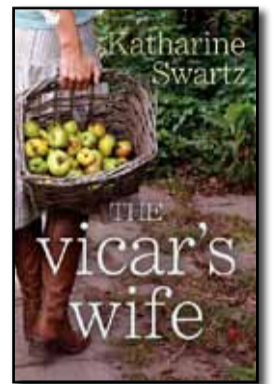
The Vicar's Wife

by Katherine Swartz

Jane is a New Yorker, city based and career driven. When her teenage daughter Natalie falls in with the wrong crowd at her Manhattan school, Jane's British husband Andrew decides to relocate from New York to a small village on Britain's Cumbrian coast, buying a vast and crumbling former vicarage.

Jane hates everything about her new life: the silence, the solitude and the isolation. Natalie is no better, and their son Ben struggles in his new school, even worse, Jane's difficulties create tensions between her and Andrew.

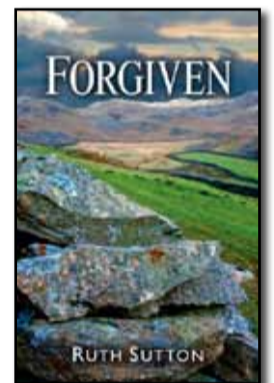
When Jane finds a scrap of an old shopping list, she becomes fascinated with Alice James, who lived in the vicarage decades before. Readers are taken on an emotional journey as two very different women confront their deepest fears....



Forgiven (Between The Mountains and the Sea)

by Ruth Sutton

Set in the immediate aftermath of World War 2 in a gloomy time of rationing, shortages and the worst winter in living memory, Secrets and lies are still a part of Jessie's life, and her career as a village school teacher is threatened by the returning servicemen. In the coal mines of Whitehaven there are the remarkable women who work at the pit-head; sorting and grading the coal. These are the settings of the unfolding drama in the post-war years for Jessie and her estranged son John.



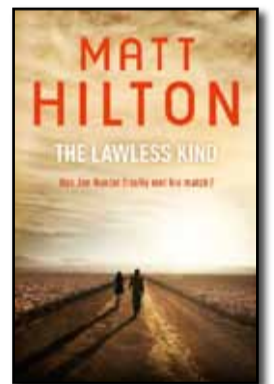
Lawless Kind

by Matt Hilton

Ex-counterterrorist soldier Joe Hunter has been called to Mexico to bring an end to a cartel that preys on the people they smuggle across the US border.

Once the mission's ended, however, Joe's mission leader and mentor, CIA Black Ops director Walter Hayes Conrad, confesses that the mission is not the real reason Joe has been summoned south of the border.

For years Walter has kept the details of his private life - especially from his family - secret from everyone, even his closest friends. However, disaster strikes when his great grandson Benjamin is abducted, kidnapped by the leader of one of Mexico's largest drug cartels.



# Masthead Winner

Carlisle Embroidery are generously donating a Solway Buzz embroidered hoodie to the winner. This is in addition to the usual Winners Certificate and £5 Gift Voucher. So, come on kids, get drawing, the Buzz is always looking for more imaginative bees and yours might be the next winner. Send them in to the address on this page and a quality Solway Buzz embroidered hoodie from Carlisle Embroidery could be yours.

You don't have to be at school here to send a bee to us. If you are here on holiday we would love to receive your bee drawing. Pick up a form from Silloth Tourist Information and return it there or send it to us, our address on page 10.

This month the winner is Sophie Jayne Stalker from Silloth Primary School with a bee called "Baby Queen Bee".

Well done!



## Free Books for World Book Night

World Book Night takes place on Wednesday 23 April this year. Organised by The Reading Agency, World Book night is a celebration of books and reading which involves volunteers 'gifting' books to members of their community to pass on their love of reading. The books are all provided free-of-charge by publishers. Reading has been shown to improve wellbeing, and World Book Night is all about encouraging people who don't read to give it a try. Members of our library staff from around the county will be taking part, giving away books in their local areas.

## Dementia Awareness Week 18-24 May 2014

Dementia Awareness Week is supported by the Alzheimer's Society. The Alzheimer's Society is a UK charity which provides support and research for those affected by dementia. In the UK, there are about 800,000 people with dementia; it is estimated that around 400,000 people have dementia but do not know it. By raising awareness about this condition, it is hoped that more people will be diagnosed earlier, giving more time for them to come to terms with future symptoms. Libraries now have Dementia Resource Bags available to borrow free of charge. The bags are full of books, pictures, activities and other resources and are aimed at people caring at home for someone with a dementia diagnosis. They are designed to help stimulate memories and conversation which has been shown to have a positive effect on people with the condition. Please ask in your local library for further information.



# Local Tradesmen and Services

## Administration

**The Bookkeeper**  
Bookkeeping, Payroll,  
VAT, Administration and  
Self Assessment Returns  
Angela Ellwood MICB  
Tel: 07919 121575  
angela.ellwood@yahoo.co.uk

## Building Services

### SCAFFOLD HIRE property maintenance & repairs

call John Morgan:  
**016973 31373**  
**07746 496580**  
**07753 859403**

Free Estimates  
Roofing, Guttering,  
General Building  
Work



## Caravan Repairs

### J. SCOTT GAS SERVICES

#### Motor Caravan & Caravan Repairs

- Servicing
  - Re-Sealing
  - Gas Servicing
  - Interior Repairs
  - Chassis Repairs
  - Damp Repairs
  - Accident Repairs
  - Van to Motorhome Conversions
- Tel: **016973 49400**  
**07823 440813**

**Advertise**  
in the  
Tradesmens  
Section  
only **£111**  
for  
ten issues  
or a 7cm box  
for only  
**£199.90**  
for  
ten issues

## Car Valeting

### Wash Your Wheels Car Valeting

Mature, Experienced,  
Professional Service  
at your premises or at  
3B Station Road  
by appointment

**Paul & Debbie Howes**  
Tel: 016973 32696 or  
07734 238617 or  
07742 946820  
**We Come To You**

## Decorators

### Peter Farrier

**PAINTER & DECORATOR**  
Tel: 016973 33039  
Mob: 07900 914484  
Email: pelisethan@sky.com

#### RELIABLE SERVICE

Papering  
Internal & External Decorating  
Domestic & Commercial  
Insurance Work  
Free Estimates  
Competitive Quotes



### Mike Jones Painter & Decorator

All aspects of interior  
and exterior painting  
and decorating.

Domestic and  
commercial.

Friendly and reliable  
service.

Free quotes and advice!

Tel Silloth: 07842 355486  
E: mikedecorator53@gmail.com



## Denture Repairs

**Addison Orthodontics**  
Dental Repair Service  
54 Esk Street  
Silloth, t: 016973 32208

## Driving Lessons

### JAZZY'S School of Motoring

jazzyschoolofmotoring.co.uk

33 years in the Profession.  
Full hour guaranteed.  
Professional, Friendly service.  
Training for all levels inc  
Refresher courses & Pass Plus.

Theory Test Pro  
Pick-up points or from home  
£20 per hour.  
Discounts for block booking  
£180 for 10 hours.

**016973 32383**  
**07764 405136**

## Firewood

### Seasoned Firewood Logs

#### DELIVERY AVAILABLE

Tel: Ashley Sharp  
**016973 31495**  
**07762 772208**

## Whinclose Firewood

Delivery Available  
Tel: Roy Ivinson  
Tel: 016973 61273  
Mob: 07949 358396



## Gardening

### Garden Services

Grass & Hedge Cutting  
Pruning & Tree Surgery  
General Maintenance  
Tel Allen: 07768 496313



## Joiners

### DAVID READ Carpentry & Joinery

#### Property Repairs & Maintenance

FREE ESTIMATES

No Job Too Big  
Or Too Small

City & Guilds  
Approved with 30  
years Experience

**016973 32245**  
**07759 783823**

### OUTDOOR JOINERY

#### All outdoor joinery work

#### Maintenance & Repair work of all kinds

#### Laminate flooring fitted

Tel Norman on:  
016973 61256 or  
0785 754 7783

## Stephen Fraser

Qualified Joiner  
Joinery & Kitchen Fitting  
Local & Reliable  
No job too small  
Tel: 07809 870604

## Paving Services

### Harrison Landscaping

#### Hard Landscaping Fencing, Turf Laying Paving, Paths & Patios

Inc: Site Levelling, Drainage & Preparation

Free Estimates & Advice  
Telephone Steven Harrison  
**016973 32401 ~ 07764 232073**

## Plumbers

**07805 045052**  
**016973 32263**

**Julie Ross**  
Plumbing  
& Heating

#### Installation, maintenance & repair of domestic plumbing and gas heating systems

Julie is a fully  
qualified &  
registered  
plumbing  
& heating  
specialist



www.julierossplumbing.com

### M. TAYLOR

Over thirty  
years  
experience  
in the  
installation,  
maintenance  
and repair of domestic  
gas and heating  
systems, all aspects  
of domestic plumbing  
undertaken no job too  
small, local and reliable

Tel: **016973 32672**  
Mob: **07773 069856**



## Roofers

### Allerdale & Eden ROOFING SERVICES

Slating & Tiling • Repairs • Lead Work  
Flat Roofing Specialist  
Fascias & Guttering  
Velux Window Installations  
Storm Damage • Insurance Work  
Free Estimates and Free Advice

Maryport: **01900 813517**  
Whitehaven: **01946 313103**  
Mobile: **07518 454396**

www.allerdaleandedenroofingservices.co.uk



## Window Cleaners

### Abbey Cleaning Services

Call Ryan on 016973  
61162 or 07732 270844  
your local reliable  
window cleaners

**Advertise** Tradesmens Section  
only **£111** for ten issues



# On the Water Front

Report by: Captain Slog  
(Assisted by David at John Stronach Shipping Agency)

March 2014  
2nd. 'Sylvia' from Gdynia with fertilizer, then in ballast to Rotterdam.  
13th. 'Baltica Hav' from Hamburg with wheat, then in ballast to Belfast.  
14th. 'Ben Maye' from Liverpool with wheat, then in ballast to Liverpool.  
17th. 'Arklow Venture' from Antwerp with fertilizer, then in ballast to Dublin.  
21st. 'Zapadny' from Amsterdam with molasses, then in ballast to the Baltic area.  
27th. 'Wilson Almeria' from Ayr with part cargo of fertilizer, then in ballast to Rouen.  
28th. 'Ferro' from Ayr with part cargo of fertilizer, then in ballast to Glensander.

## Larger Ships – Larger Cargoes

Over the past twenty or so years, there is no doubt that the average size of ships routinely visiting

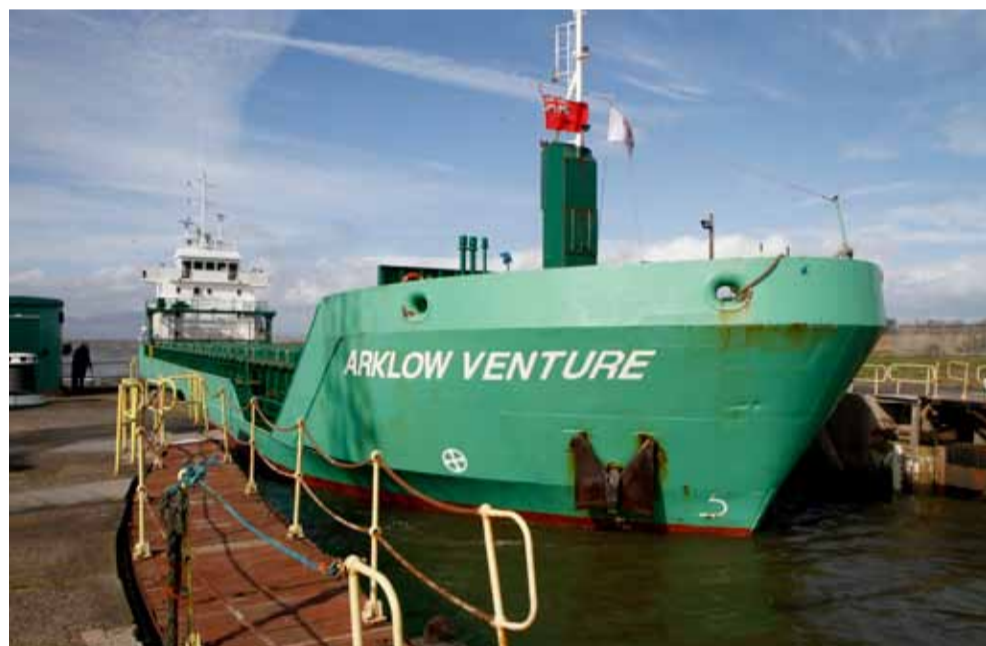
port, which has not changed at all. The bottleneck at Silloth is the width of the New Dock entrance, which is just 16.5 metres at the cill, (pronounced 'sill', it is the step at the bottom of the dock entrance that the dock-gates close against, to create a seal). Ships with a beam of over 13.5 metres will only be accepted in favourable weather conditions. The molasses tanker 'Zapadny' for example, which regularly calls at Silloth and is rather old and unwieldy, has a beam of 14.4 metres and so has to be handled with particular care.

The width of the New Dock is 120 metres; therefore the maximum length of ship generally accepted is 90 metres, which allows just enough room for turning the ship around if another ship is lying alongside one of the quay walls. Longer ships are accepted, but only in good weather and if the dock is free of other vessels that might cause an obstruction.

# Tide Tables

MAY 2014		SILLOTH							
		DEPTH ON NEW DOCK GAUGE							
		High Water				Low Water			
Date		Morning		Afternoon		Morning		Afternoon	
		Time	m	Time	m	Time	m	Time	m
1	TH	00:34	7.3	12:54	7.2	07:43	-1.2	19:56	-1.0
2	F	01:11	7.1	13:33	6.9	08:20	-1.0	20:29	-0.8
3	SA	01:47	6.8	14:11	6.4	08:56	-0.7	21:01	-0.5
4	SU	02:24	6.4	14:49	6.1	09:29	-0.5	21:31	-0.2
5	M	03:05	6.0	15:35	5.5	10:04	-0.2	22:07	0.1
6	TU	03:54	5.5	16:31	5.1	10:47	0.1	22:55	0.4
7	W	04:56	5.1	17:38	4.8	11:46	0.3	23:59	0.6
8	TH	06:10	4.9	18:54	4.8			13:00	0.4
9	F	07:22	5.0	20:00	5.0	01:16	0.6	14:11	0.2
10	SA	08:22	5.3	20:54	5.4	02:28	0.3	15:11	-0.0
11	SU	09:11	5.8	21:37	6.0	03:28	-0.0	16:02	-0.4
12	M	09:54	6.2	22:16	6.4	04:19	-0.3	16:49	-0.7
13	TU	10:32	6.5	22:53	6.9	05:07	-0.6	17:35	-0.9
14	W	11:10	6.9	23:31	7.1	05:52	-0.9	18:18	-1.0
15	TH	11:51	7.1			06:37	-1.1	19:00	-1.2
16	F	00:10	7.3	12:31	7.2	07:21	-1.2	19:42	-1.2
17	SA	00:52	7.4	13:16	7.2	08:04	-1.2	20:23	-1.1
18	SU	01:38	7.3	14:04	7.0	08:48	-1.2	21:05	-0.9
19	M	02:27	7.1	14:57	6.6	09:32	-1.0	21:50	-0.6
20	TU	03:21	6.8	15:57	6.3	10:22	-0.7	22:43	-0.4
21	W	04:24	6.4	17:03	5.9	11:20	-0.5	23:45	-0.2
22	TH	05:34	6.2	18:16	5.8			12:27	-0.5
23	F	06:45	6.1	19:28	5.8	00:56	-0.1	13:38	-0.5
24	SA	07:52	6.2	20:33	6.0	02:07	-0.2	14:44	-0.5
25	SU	08:54	6.4	21:29	6.3	03:15	-0.4	15:49	-0.7
26	M	09:47	6.6	22:16	6.6	04:17	-0.6	16:45	-0.7
27	TU	10:33	6.8	22:59	6.9	05:11	-0.7	17:34	-0.8
28	W	11:16	6.9	23:37	7.0	05:58	-0.9	18:16	-0.9
29	TH	11:56	6.9			06:42	-1.0	18:54	-0.9
30	F	00:14	7.0	12:33	6.8	07:22	-1.0	19:30	-0.8
31	SA	00:48	6.9	13:11	6.6	07:58	-0.8	20:02	-0.7

Times shown in UTC. Add 1 hour for British Summer Time.



Arklow Venture is 90m long x 13.6m beam x 6.1m draft

Silloth has gradually been getting larger. Factors that allow these larger ships to be accommodated are their improved power, manoeuvrability and reliability. Consequently the tonnage of cargo being discharged has also grown. Back in the early 1990's the typical cargo was 1,500-2,000 tonnes. Now it is more like 2,500-3,500 tonnes. The size limitation of the ship is of course governed by the physical dimensions of the



Wilson Calais is 100m long x 12m beam x 5.8m draft

cargo weight for the port of Silloth. The cargo discharged amounted to 4,214 tonnes of fertilizer, beating the previous record by 62 tonnes.

For general interest, I have listed below the current holders and a few of the previous record holders of 'Cargo Weight', 'Length' and 'Beam' for Silloth.

'Cargo Weight':  
17/03/14 'Arklow Venture' 4214 tonnes.  
25/03/08 'Arklow River' 4152 tonnes.  
02/04/07 'Anmi' 3901 tonnes.

'Ship Length':  
17/01/95 'Sovietskiy Sever' 114m.  
13.7.11 - m.v. 'Wilson Cadiz' 100m.  
04/09/1903 'Britannia' 110m  
17/07/29 'Michael L Tricoglu' 105m.

The two ships that brought two giant wind turbines each to Silloth in 2011, were just 100 metres long.

'Ship Beam':  
29/07/80 'Aberthaw Fisher' 16.5m.  
03/09/87 'Tequila Sunrise' 15.5m.

number of tides available for ships of that depth and so a relatively deep ship is a rare occurrence.

On 17th March this year, the port accepted a fairly large and unusually deep ship, with a draft of 6.1 metres. Consequently this ship, the 'Arklow Venture', (90m x 13.6m x 6.1m), was able to bring a new record

# Phone Book

This section recognises those whose financial help keeps us going. If you wish to contribute in this way without taking an advert, please contact the Buzz, it costs only £45 a year.

- Abbey Cleaning Services 07732 270844
- Addison Orthodontics 016973 32208
- Allerdale & Eden Roofing Serv' 01900 813517
- Beacon Veterinary Centre 016973 20242
- Bowen Therapy 016973 31632
- Pet Foods --C & D Supplies 016973 32590
- Carrs Coaches 016973 31276
- Computer Problems 016973 32089
- D A Harrison 016973 42277
- David Read 07759 783823
- Garden Services 07768 496313
- Golf Hotel 016973 31438
- Good Companions 016973 31553
- Harrison Landscaping 07764 232073
- Harrisons Store Ltd 016973 61231
- Hopes Estate Agents 016973 32018
- Ice Cream Factory 016973 32395
- J Scott Caravan Repairs 07823 440813
- Jackies Footcare 016973 32373
- Jane's Pet Portraits 07783 296070
- Jaybees 016973 31245
- Jazzy's School of Motoring 07764 405136
- Julie Ross Plumbing 07805 045052
- Kirkup Butchers 016973 32000
- KL Express 016973 33033
- M & C Taxis 07917 564583
- Markley IT Consultancy 016973 31276
- Mike Jones Decorator 07842 355486
- Mike Taylor Plumbing 07773 069856
- Outdoor Joinery 016973 61256
- Peter Farrier 016973 33039
- Photography by Peter 016973 32180
- Pink Poodle 07519 223364
- Queens B & B 016973 31373
- Rainbow Flowers 016973 43434
- Robinson Car & Commercial 016973 31940
- Sandra Hickebottom 016973 61440
- Scaffold Hire 07746 496580
- Scotts Furniture 016973 31224
- Seasoned Firewood Logs 07762 772208
- Silloth Cafe 016973 31319
- Silloth Rugby Club 016973 32299
- S.O.S.C.S. 016973 32452
- Solway Buzz 016973 32180
- Solway Holiday Village 016973 31236
- Solway Private Hire 016973 32310
- Sonali 016973 32525
- Top Secret Roadshow 07736 774788
- Stamper & Co 016973 33120
- Stanwix Park 016973 32666
- Station Tea Room 016973 31845
- Stephen Fraser Joiner 07809 870604
- Tanglewood Caravan Park 016973 31253
- The Bookkeeper 07919 121575
- The Charity Shop 016973 31696
- Top 2 Toe Beauty Salon 016973 31591
- Upholstery, Irene Armstrong 016973 31836
- Wallsend Guest House 016973 51055
- Wash Your Wheels 016973 32696
- West Silloth Motors 016973 32833
- Whinclose Firewood 016973 61273
- Winters Post Office 016973 31323



**Advertise**  
in the  
**Tradesmens**  
**Section**  
only **£111**  
for  
ten issues  
or a 7cm box  
for only  
**£199.90**  
for  
ten issues

## Useful Tel Numbers

- Age Concern Home Safety Scheme 01946 68986
- Chemist, Silloth: 016973 31394
- Community Grants: 01900 325013
- Crime Stoppers: 0800 555 111
- Dental Emergency: 01228 603620
- Dentist, Buchanan: 016973 31270
- Dentist, Steel: 016973 32042
- Doctor: 016973 31309
- Doctor CHOC service 03000 247 247
- First Responders can only be called by the Ambulance service, call: 999
- Gas: 0800 111 999
- Highways Hot Line 0845 6096609
- Hospital: 01228 523444
- Holme St. Cuthbert School
- Mawbray: 01900 881242
- Holm Cultram Abbey CofE School
- Abbeystown: 016973 61261
- MP, Tony Cunningham: 01900 65815
- NAP 01900 702898
- Neighbourhood Forum: 01900 325013
- Police: 101
- Quakers, Wigton: 01228 523174
- Register Office, Wigton: 01228 221122
- Samaritans: 01228 544444
- Silloth Community School: 016973 31234
- Silloth Library 016973 31944
- Silloth Nursery & Junior School: 016973 31243
- Silloth Town Clerk: 016973 31128
- Allerdale B. Council 01900 702702
- Silloth Tourist Information Centre: 016973 31944
- Solway Buzz: 016973 32180
- Solway Private Hire: 016973 32310
- Vet: 016973 20242
- Waste Disposal Dept: 01900 702800
- Water LeakLine: 0800 33 00 33
- Please, let us know what you want included, also any changes to numbers.

## The Good Companions Residential Care Home

Long & Short Term Stays in  
Single En-Suite Rooms  
Meals on Wheels service  
available locally



www.gchc.co.uk

Criffel Street ~ Silloth ~ tel: 016973 31553



# Kick the Habit

Smokers in Cumbria are being urged not to forget the benefits of giving up cigarettes even once today's No Smoking Day has past.

Across the UK one in five adults smoke, with studies showing around two thirds of smokers want to quit.

In Cumbria it's estimated that nearly 88,000 adults smoke. This can be broken down by district:

- Allerdale: 17,500
- Barrow: 13,300
- Carlisle: 21,100
- Copeland: 16,200
- Eden: 5,900
- South Lakeland: 13,400

These latest figures, from 2012, continue the downward trend of smoking in recent decades.

Cllr Patricia Bell, Cumbria County Council's Cabinet member for Public Health said: "Quitting smoking is the single best thing people can do for their

health, and No Smoking Day is a great chance for smokers in Cumbria to quit, knowing they'll be doing it alongside thousands of other people across the UK. Quitting means that, as well as reducing your risk of developing cancer, heart or lung disease, you will also reduce the chances of your children suffering from bronchitis, pneumonia, asthma attacks, meningitis and ear infections - all caused by second hand smoke. On top of this fertility levels are increased, your breathing and general fitness will improve and you'll most likely save several hundred pounds a year. And remember - It is never too late to quit."

Getting support is the first step to quitting, and you can do this by either texting QUIT to 82540, calling on 01900 324222, or by visiting your local pharmacy.

# Get Ready for the Mythical Maze Challenge

The theme for this year's Summer Reading Challenge is Mythical Maze. Mythical Maze challenges children aged 4-11 to find their way around a labyrinth that introduces them to fantastical creatures from the world of legend and mythology, collecting stickers for each character along the way.

The Summer Reading Challenge is a fantastic way to keep children interested in books and reading over the long summer holidays. All they need to do is read six books - they can be any kind of book, as long

as they've borrowed them from the library. Every time they finish a book, they get stickers and rewards, and there's a certificate for everyone who completes the challenge.

Look out for more information about the Mythical Maze, and Summer Reading Challenge events and activities in your local libraries as we get closer to summer. For more information on general children's activities and events in libraries visit [www.cumbria.gov.uk/libraries](http://www.cumbria.gov.uk/libraries) or check out our Facebook pages.

# Astrology

## CAPRICORN

December 22 to January 19  
 'Who climbs and schemes for wealth and place? And mourns the brother's fall from grace? But takes what's due in any case -  
 Safe CAPRICORN.



The Goat is a determined climber up the mountain where he lives - and the Capricorn native is no different - except that he/she is climbing a social mountain, or ladder, to achieve a recognised status in this world. Status, not size, really does matter to this individual! Always conscious of 'position', Capricorn is ambitious and determined to reach the top!

### The Bright Side:

Prudent, disciplined and hard-working, with unending perseverance, a Capricorn person often achieves their goals and reaches the 'top of the pile'; whether this is ultimately 'right' and emotionally satisfying in the longer term

is another matter! However, their tenacious personality can render them lucrative rewards and together with their good sense of humour will help them along as they seek to impose some sort of order on their world.

### The Dark Side:

As a direct result of the above scenario, Capricorn's lifetime struggle can often make them appear rigid, somewhat cold and harsh - even ruthless - with others in their efforts to succeed. Spontaneous they are not, favouring the conventional and familiar - which can sometimes translate into Capricorns being a bit of a 'wet blanket'!

Health-wise, skin and

bones are areas to take care of: watch those knees and eat up your greens - they're good for any eczema! Colours associated with this sign are black and grey and their gemstone is made of jet.



# Microwavable Wheat Bags

When using items such as these that absorb and store heat in this way, there is a potential fire risk if not used properly. For this reason it is vital to follow manufacturers' instructions to avoid possible injury.

If a bag is kept insulated after heating - for example, under bedclothes - it may ignite.

### Do

- Buy wheat bags with clear heating instructions from the manufacturer, and follow them.
- Buy bags which include a British safety standard and manufacturers' contact details if you have a problem.
- Only use as a heat pack for direct application to the

body.

- Ensure your microwave turntable is working properly.
- Watch for signs of overuse, such as a smell of burning or charring.
- Leave bags to cool in a safe area and on a non-combustible surface like a kitchen sink.

### Don't

- Use a wheat bag as a bed-warmer.
- Overheat the bag.
- Reheat the bag until it has completely cooled - which may take up to two hours.
- Leave the microwave unattended when heating.
- Store away until it has cooled.
- Use the bag if you see evidence of problems.

# Home Fire Safety Helpers

Would you like to assist Cumbria Fire & Rescue Service in your neighbourhood? We have a number of reports from properties in different areas across the county that have beeping smoke alarms in order to increase the service we offer to local, particularly rural communities, we are looking for people to be trained to visit local houses when we get reports of beeping smoke alarms - to check them & / or to carry out basic home safety checks.

We would provide you with the relevant training and all the necessary resources and it would be to homes in your own local neighbourhoods. Out of pocket expenses would be paid e.g. mileage, car parking etc.

Each week we run FireSafe events in different areas whereby a group of Cumbria Fire & Rescue Service staff & volunteers increase awareness of home fire safety to a particular area and fit smoke alarms to vulnerable homes.

This is a great way of enhancing your own skills, helping your own community and being involved in team work.

If the above is of interest to you, please contact me for further details either by replying to this message or via my details below.

We look forward to hearing from you. Valerie Ayre, Community Safety Officer, Cumbria Fire & Rescue Service. Tel: 07769 614561 [valerie.ayre@cumbria.gov.uk](mailto:valerie.ayre@cumbria.gov.uk)



## THE CHARITY SHOP

(Good Causes, Silloth)  
 1 Queen's Court  
 Criffel Street  
 Silloth  
 Tel: 016973 31696  
 Closed Mondays

Your support is greatly appreciated

- Eden Valley Hospice
- Cumbria Air Ambulance
- Marie Curie Cancer Care
- Macmillan Cancer Support
- North Lakeland Hospice at Home
- Silloth Nursing Home

## Stamper & Co

Accountants & Financial Consultants  
*Friendly \* Professional \* Efficient*

Book Keeping	Business Plans
Tax Advice	Secretarial Services
P.A.Y.E.	Self Assessment
VAT	Business Set Up
Accounts-Preparation	Capital Raising
	Motivation Training

**Free Initial Consultation tel: 016973 33120**  
 6 Eden Street, Silloth, CA7 4AD

## The Queens

### Bed & Breakfast

Full en-suite rooms ~ Sea Views

Call: 016973 31373, Mob: 07753 859403  
 email: [moregain@tiscali.co.uk](mailto:moregain@tiscali.co.uk)  
 The Queens, 1 Park Terrace, Silloth

## BOWEN THERAPY

a gentle 'hands on' body treatment for many painful conditions, stress management and health maintenance

by Lynn Devine Cert. ECBS  
 Tel: 016973 31632  
 'Lynnwood', 5 Pine Terrace, Silloth, CA7 4DT

## Rainbow Flowers

### Designs by Judith

Beautiful, quality fresh flowers for every occasion

35 years experience in floristry

Telephone orders welcome, same day delivery

Open 7 days, Monday - Friday 9am to 4:30pm  
 Saturday 9am to 2pm, Sunday 10am to 2pm

10 King Street, Wigton, CA7 9DT  
 Tel: 016973 43434



## Smoke Alarm Warning

Cumbria Fire and Rescue Service (CF&RS) have been providing homeowners with free smoke alarms as part of their prevention work for over a decade. The alarms provided have about a 10 year battery life. Once the battery that is within the alarm has come to the end of its working duration the alarm will beep intermittently to alert you to change the battery.

CF&RS have been issuing 'Fire Angel' smoke alarms since 2007. These Fire Angel alarms have a battery encased within the alarm that cannot be accessed or changed by the homeowner. Once this type of alarm starts to beep the whole alarm will need to be

replaced.

A small percentage of these alarms may show signs that the battery life has come to an end and the alarm starts to beep before the 10 year battery life has ended. If this fault occurs please contact the manufacturer directly on 0800 141 2561 to receive a replacement alarm free of charge within 48 hours. If you experience any problems in gaining a new alarm please contact CF&RS on our Freephone number 0800 358 4777.

For advice and information on our new Home Safety Visit Assessments please visit [www.cumbriafire.gov.uk](http://www.cumbriafire.gov.uk) and follow the link at Home Safety Visit Assessment.

## Mike Paints Nails to Raise £1,000



Society and Radio Cumbria. There was also a cake stall with very tempting offerings and tea and coffee were also on offer.

He hopes to raise lots of money for two local charities.

£1,000 plus was the initial target to be split 50/50 between Jigsaw Appeal (Cumbria's Children's Hospice) and the Silloth Lifeboat (RNLI). With £200 already in the kitty it is hoped to raise the target much higher.

Alongside the Nail Painting, a monster size Pooh Bear will be travelling to local events where raffle tickets for him, will be available and the winning ticket will be drawn at the end of the summer. The winner will also receive a complete diary with pictures



Pooh with Mike at Jigsaw, (Carlisle Children's Hospice)

Mike at any branch of the Cumberland Building Society via the account "Nails for Jigsaw and Lifeboat"

## Get Out - Get Healthy

Banish the blues with a step in the right direction

With evenings getting lighter, Cumbria's public health bosses are urging people to take full advantage and get exercising to banish the winter blues.

It's long been known that regular exercise is good for our physical health by potentially reducing the risk of cancer, heart disease and strokes. And in recent years, studies have shown that regular physical activity also has big benefits for mental health. Exercise can help people with depression and prevent them from becoming depressed in the first place.

Dr Rebecca Wagstaff, Cumbria County Council's Acting Director of Public

Health, said: "The lighter evenings often give us a lift and a great excuse to get out, get some fresh air and do some exercise. Anyone with depression can benefit from doing regular exercise, but it's especially useful for people with mild depression."

Cllr Patricia Bell, the county council's Cabinet member for Public Health, said: "Any type of exercise is useful as long as it suits you and you do enough of it and don't forget it should be something you enjoy. To stay healthy, adults should do 150 minutes of moderate activity every week - that could be cycling, running, swimming or simply just walking. In Cumbria we're lucky enough to have our

very own outdoor adventure playground - and you don't have to do anything extreme to enjoy it."

As a first step, you could take part in a team sport, attend classes at a sports centre or just be more active in your daily routine by walking or cycling instead of travelling by car.

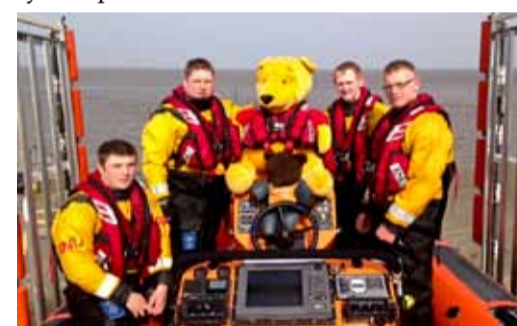
Many treatments are available for depression, including talking therapies, antidepressant medication and self-help of various kinds. If you've been feeling down for more than two weeks, see your GP to discuss your symptoms. They can tell you about the choice of treatment available for depression and help you decide what's best for you.

Throughout the summer Mike Faulkner from Abbey Town will raise funds and increase the awareness of two Cumbrian charities by having his thumbs and fingernails painted.

Earlier, on the 21st March, he had his nails painted with a variety of colours and glitter, by Becky Harrison from 'A Touch of Beauty', at a craft fair in Abbotstown with stalls from the Silloth Woodcarvers Group, Silloth Sewing Circle, Cumberland Building

of all the places visited and people Pooh has met on his travels.

You are able to sponsor



Chris Clark, Steve Wright, CREW BEAR, Dan Ware, & Steve Ryan

## Free Health Check Can Save Lives

Public health experts at Cumbria County Council have estimated 50 per cent of Cumbrians with high blood pressure don't even know they've got it.

But a simple free health check could make the difference and get you early treatment and advice to help prevent heart disease, strokes, vascular damage, and chronic kidney disease.

It is estimated around 25,000 people in the county have undiagnosed high blood pressure.

Known as the 'silent killer', high blood pressure rarely has obvious symptoms, and if left untreated it increases your risk of a heart attack or stroke.

Having high blood pressure can be prevented by eating healthily, maintaining

a healthy weight, taking regular exercise, drinking alcohol in moderation and not smoking.

Cumbria County Council is responsible for commissioning NHS health checks for adults between the ages of 40 and 74. The health check includes a cholesterol test, a blood pressure test, a BMI check and a diabetes risk-assessment.

Cumbria's Acting Director of Public Health Rebecca Wagstaff said: "If your blood pressure is higher than it should be the chances are you won't be aware of it, but it can have a devastating effect on your health and is a leading cause of heart attacks and strokes. I'd like to see as many 40 to 74 year olds as possible having a health check so that high blood

pressure can be diagnosed early and treated - it's a life-saving opportunity. Thinking more about our health is vital to living a long and prosperous life."

Cllr Patricia Bell, Cumbria County Council's Cabinet member for Public Health, said: "Health checks are easy, straightforward and will be carried out by a trained health care professional. These conditions can have a devastating effect on people's lives and the basic fact is that the more people who have a health check, the more lives can be saved."

If you're in the 40 to 74 age bracket and would like a free health check, visit a participating pharmacy or contact your GP for more information.

### LEGAL & OFFICIAL

Allerdale Borough Council  
NOTICE OF APPLICATION FOR  
A CLUB PREMISES CERTIFICATE  
LICENCING ACT 2003

Notice is given that we, Silloth Rugby Club have applied to Allerdale Borough Council for a club premises certificate for Silloth Rugby Club, The Old Marshalling Yards, Silloth, CA7 4AX for the sale of alcohol and to allow the holding of Regulated Entertainment to include live music, singing, dancing, live performers, playing of recorded sound, sporting/ game competitions in the presence of an audience (including but not limited to darts and snooker/pool, etc.), showing of a film, performance of a play and late night refreshment between the following hours.

REGULATED ENTERTAINMENT

Monday to Thursday 10:00 to 23:30

Friday and Saturday 10:00 to 01:00

Sunday 10:00 to 00:30

Public Holidays 10:00 to 00:30

SALE OF ALCOHOL

Monday to Thursday 10:00 to 23:30

Friday and Saturday 10:00 to 01:00

Sunday 10:00 to 00:30

Public Holidays 10:00 to 00:30

OPENING HOURS

Monday to Thursday 10:00 to 23:30

Friday and Saturday 10:00 to 01:00

Sunday 10:00 to 00:30

Public Holidays 10:00 to 00:30

Any person wishing to make relevant representations on this application may do so in writing by not later than 29th April 2014 to Licensing Department, Allerdale Borough Council, Allerdale House, Workington, Cumbria, CA14 3YJ or by emailing to [licensing@allerdale.gov.uk](mailto:licensing@allerdale.gov.uk). The full application can be viewed at the Allerdale House, Workington, CA14 3YJ between the hours of 10:00am to 4:00pm Monday to Friday.

IT IS AN OFFENCE, knowingly or recklessly to make a false statement in connection with an application for which you may be liable to a fine of up to £5000 on summary conviction.

### KESWICK SOCIETY OF ART

Our Spring Exhibition is being held from  
Friday 15th May until Tuesday 27th May

at the Congregational Hall, Lake Road,

(diagonally opposite George Fishers) Keswick.

It will be open from 10am until 6pm each weekday,

10am to 8pm on Saturday, closed on Sundays and

the last day from 10am until 4:30pm.

Entrance is free.

[www.KeswickSocietyofArt.co.uk](http://www.KeswickSocietyofArt.co.uk)

### VACANCIES

#### Golf Hotel Receptionist

The Job:

Answer Telephone  
Deal with Enquiries  
Assist Breakfast Service  
General Hotel Duties  
Daily/Weekly Cash Reconciliation

The Person:

Outgoing Pleasing Personality  
A People Person  
Can Do Attitude  
Able to work on own & as Part of a Team  
Experience of Microsoft Office

Hours of Work 20 - 24 per Week

Salary Negotiable Dependant on Experience

Apply to:

Golf Hotel, Criffel Street, Silloth, CA7 4AB

### Kirkup & Sons Butchers

Try Our Special Pies and Sausages

All Our Meat is Locally Sourced

Hog Roast & Outside Catering Available

15 Eden Street, Silloth, CA7 4AD

Tel: 016973 32000

### Jackie's Footcare

A Qualified  
MOBILE Foot Health Practitioner

Nail trimming, corn & callus removal, verrucae & diabetic foot care

Jackie Thompson  
DipCFHP, MPSPract

Tel: 016973 32373



# Silloth Tigers on a High

Report by: Mark Orchard

Silloth welcomed West Cumbrian side Moresby on 22nd March, the only side to beat them this season. The game started with a penalty for Moresby. Moresby kicked the long range penalty and went ahead 0-3. Silloth responded and with only one thing on their mind they destroyed their visitors in a one way 54-3 victory. The big revenge win saw Silloth stand off Steven Stoddart join Dean Scholey and Ricki Sutcliffe in scoring over 100 points in a season. This is another remarkable statistic only achieved by Silloth in Cumbria this season.

There was a break the following week and as always the Tigers opted to train. That week saw Furness regain top spot in the league as they played their game in hand over Silloth. Silloth, now second in the league travelled to Kendal on 5th April and came away with all 5 points courtesy of a one way 31-0 bonus point win.

Saturday 12th April was the league finale and Silloth welcomed Carlisle side Creighton, Silloth's priority was to win and



Scrum half Ellis Nixon opening the scoring for Silloth

protect Cumbria's only 100% unbeaten home record. Silloth proved far too good for the visitors and ran out 62-8 winners, the game saw Winger Ricki Sutcliffe break Coach Mark Orchard's long standing Club Try scoring record of 33. Sutcliffe's tally

of 4 tries took him to 34 for the season and in doing so he overtook Dean Scholey and become the clubs highest points scorer this season. We are waiting for confirmation of his seasons tally making him the county's leading try scorer.



Winger Pete Fearon on a run



Steven Stoddart cutting through Creighton defence



Player Coach Mark Orchard looking for a gap with Ellis Nixon in support

# SOSCS Donate Strips



Kids at an Eden Street training session, all are welcome, membership forms from Coaches

Report by: Steve Hart

Silloth Football Club would like to thank the good ladies from the SOS Charity Shop for sponsoring a new kit and hoodies for our u-7s Mini Gulls Squad.

The kids will hopefully be playing in the u-8s League next season.

Training in the summer is from 4pm to 5pm every Wednesday at Eden Street Playing Fields. We are holding events throughout the summer for all kids. The first event will see us having a mini tournament as part of Silloth Greenday Celebrations on 25th May. A tournament for the u-10s on Saturday 21st June. A Funday for all during the August Bank Holiday Sunday from 1pm to 5pm.



Millionaire WannaBee  
by  
Joshua Williamson  
from  
Holm Cultram Abbey School

Singing Bee  
by  
Ella Thompson  
from  
Holme St Cuthbert School

**HOPES Estate Agents**  
SILLOTH AND SOLWAY COAST  
For advice regarding the sale, letting or valuation of property contact your local office on 016973 32018  
8 Station Road ❖ Silloth ❖ CA7 4AE  
[www.hopesofwilton.co.uk](http://www.hopesofwilton.co.uk)

**SILLOTH CAFE**  
Traditional Fish & Chips  
Sit-In or Take-Away  
Special Wheat Intolerance Gluten Free Option  
Pensioners Meal Deal: Monday – Friday  
Closed Wednesdays  
Station Road, Silloth, Tel: 016973 31319

**Top Secret Roadshow**  
Mobile Disco For Any Occasion  
I specialize in Weddings and all Family Celebrations, eg: Christenings to Funeral Wakes Or any Fundraising Event, also Carnivals & Village Halls catered for.  
Contact Details Below  
[ericstanwixjr1@btinternet.com](mailto:ericstanwixjr1@btinternet.com)  
Home Tel: 016973 32141 M: 07736 774 788

**Solway Private Hire**  
advance booking essential  
Airport Runs  
Wedding Cars  
Days or Nights Out  
Car's to Minibuses Available  
Tel: 016973 32310  
[www.solwayprivatehiresilloth.co.uk](http://www.solwayprivatehiresilloth.co.uk)