

## Guided Walks

### Guided Walks from Silloth Tourist Information Centre

Every Wednesday during July, August and September discover the local bird life with R.S.P.B. member Tom Brown. Walks cost 60p each and start from the tourist centre at 11:00am. Wear comfortable shoes and bring your binoculars (if you have them). Walks last 2–3 hours.

Seashell Safaris, led by local couple Norman and Florence Hammond, take place on Tuesday 23rd July at 2:00pm.

Friday 2nd August at 10:30am.

Wednesday 7th August at 2:00pm.

Thursday 15th August at 10:30am.

Wednesday 21st August at 2:00pm.

Friday 30th August at 10:30am.

Wednesday 4th September at 2:00pm.

During Irish Sea Marine Week: – August 10<sup>th</sup>-18<sup>th</sup> an evening walk will be taking place. The natural history of the Solway Firth with special reference to the harbour porpoise. The walk will start at 6:00pm. and could last to 10:00 or 11:00pm. Sorry no children under 10 years of age allowed on this walk. Starting point will be decided nearer the time. Booking essential.

Walks cost 60p per person whatever age. Please pay in the Tourist Information Centre.

The organisers reserve the right to cancel or change any of these walks.

Queen Elizabeth  
by  
Stephanie Enderby aged 7  
from  
Holm Cultrum Abbey School



## On the Waterfront by Tommy Legs

April proved a busy month 16 vessels visiting the port, seven of which arrived in the last week.

On the 2nd two vessels arrived with cargoes of fertiliser – Hester from Ijmuiden and Vasiliy Malov from St. Petersburg followed on the 4th by Roger from Rostock with wheat.

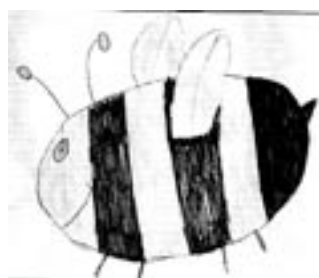
During the next week there were three cargoes of fertiliser carried by the Hoo Kestrel, Ilona-G and Lass Neptune.

The Lass Neptune returned the next week with fertiliser, followed by the Dutch ship Rubyn with wheat from Rostock.

During the last week three cargoes of fertiliser arrived on the Crescent Rhine from Vernon in France, the Arion from Sfax in Tunisia and the Trorzenberg from Klaipeda.

There were five visits from Ramsey Steamship vessels Ben Maye and Ben Ellan loading cement for Ireland and bagged fertiliser for the Scottish Isles.

Work has commenced on the installation of two extra tanks for the molasses tankers, which hopefully provide extra trade.



Boris Bee  
by  
Abigail Wright aged 10  
from  
Holm Cultrum Abbey School

### Dryholme Farm Charity Ride

Sunday 16th June

**In aid of ILPH  
12 & 20 miles of  
scenic riding**

Contact Mrs C. Johnson  
tel: 01900 818802  
for entry forms.  
*Rosettes, Raf es &  
Refreshments*

## BANK MILL NURSERIES

midway between Mawbray and Beckfoot  
on the Maryport to Silloth road

**Tel: Allonby (01900) 881340**

Full range of home grown plants from  
plugs to grow on  
to mature plants

Basket Plants – Bedding Plants  
Perennials – Alpines – Heathers – Herbs  
Conifers – Shrubs – Trees

Specialists in Container Plants

Established Baskets and Containers  
Let us replant your old basket

Also  
Composts • Containers  
Bowls • Baskets etc.  
to do it yourself

## Bowman's Chemist

1-3 Station Road • Silloth  
Tel: **016973 31394**



Prescriptions dispensed  
Free confidential advice

Pregnacy testing  
on premises

Nicotine replacement  
therapy

vitamins ☼ health foods



Perfumes, toiletries  
cosmetics,  
Sun Tan preparations  
foot care

**All at competitive  
prices**



Films, Reprints &  
Enlargements

*New Owners  
New Beers  
Same Traditional Values*

## The Albion

*For Traditional Ales in  
a Traditional Pub*

Eden Street, Silloth  
Tel: 016973 31321

## Judith Jameson

**Ladies  
Hairdressing  
Salon**

6 Station Road  
Silloth  
Tel: **016973 31308**