

Christingle Service



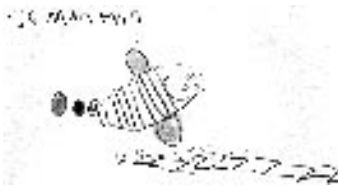
Christ Church with St. Paul's Christingle Service was held on Sunday 3rd February, led by David Pigeon.

It was a wild, wet Sunday morning but this did not deter the many young people who assembled to celebrate the Chistingle.

The Brownies, Rainbows,

Cubs, members of the Pebbles and Bulldogs Youth Clubs, Mums and Minis were all represented. The children from year four of the Junior School helped to demonstrate the Christingle.

The Christingle begins with an orange – like the World which the Lord God made.



Samantha ? aged five from Holme St. Cuthbert, Mawbray



Rachel Bell aged nine from Silloth Primary School

Beer Festival

Work has started on this years four day festival being held on the 5th to 8th September.

A new eight strong committee will keep the format much the same as last year, with a greater selction of wines, beers and ciders. We would like to thank everyone for their support and hard work last year, without your help we wouldn't have such a great event. We hope you can all help again this year.

Nith View GUEST HOUSE

AA ◆◆◆

Overlooking the sea. B&B from £16.00 p.p.p.n.

En-suite rooms.

Families catered for. Private parking at rear.

Tel: Debbie Armstrong on: (016973) 31542 email: nithview@aol.com

Mrs F. Buchanan

DENTAL SURGEON

NHS & Private Dentistry

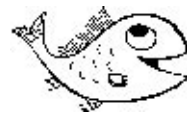
3 Alma Terrace Silloth Tel: 016973 31270

THINKING OF EXTENDING, MAKING ALTERATIONS? THEN YOU'LL NEED PLANS DRAWN.

For a free consultation with no obligation – contact:

Mark Armstrong Tech RICS

PLANRIGHT Nith View, 1 Pine Terrace Silloth. Tel: 016973 31542



JOHN'S PLAICE

TRADITIONAL FISH & CHIP SHOP

TAKE AWAY – EAT IN
20-Seater Traditional Fish Restaurant

OPEN EVERY DAY EXCEPT MONDAYS

12 Solway Street • Silloth • CA7 4AR Tel: 016973 31597

FARMHOUSE BAKERY Traditional Farmhouse Fare

Biscuits, Tray Bakes for your coffee
Cakes for teatime
Large & small fruit loaves

Seaville Farm, Silloth, CA7 4PT, tel Kath: 61256

FARMHOUSE JOINERY

Gates * Doors * Poultry Arks
Seaville Farm, Silloth, CA7 4PT, tel Norman: 61256

Winters

Newspapers ~ Magazines
Sweets ~ Rock Novelties
Gifts ~ Toys
Greetings Cards ~ Postcards
Fax & Photocopying service

Eden Street ~ Silloth (opposite the Golf Hotel)